

A map of MSA 14860 Bridgeport-Stamford-Danbury CT
 Income as % of the MSA Median: Upper-Income (86), Middle-Income (55), Moderate-Income (46), Low-Income (35), All Others (2)
 Outline of the County Equivalent - shown in a pink outline, Tract 2020 - shown in a Black outline, Town - shown in a yellow outline, Water - shown in a blue outline, State - shown in a Black outline

Disclaimer: The income tract level information has not been updated to reflect the MSA/MD delineation changes issued in 2023 as it has not been released by FFIEC at the time of this publication.

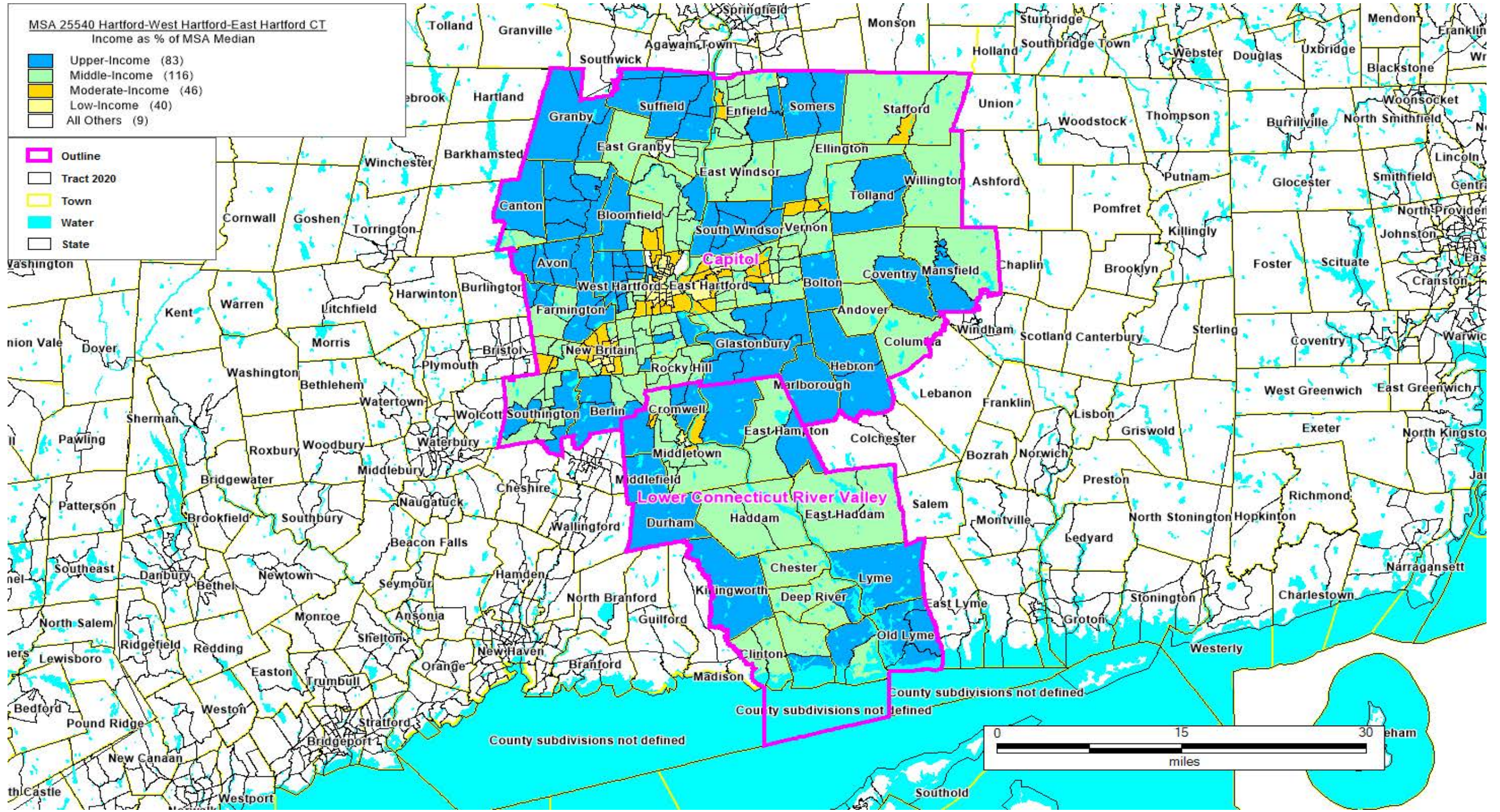
CONNECTICUT

MSA 14860 Bridgeport-Stamford-Danbury CT
FORMAT: STATECODE/COUNTYCODE/TRACTCODE

09/120/0601.00, 09/120/0602.00, 09/120/0603.00, 09/120/0604.00, 09/120/0605.00, 09/120/0606.00, 09/120/0607.00,
09/120/0608.00, 09/120/0609.00, 09/120/0610.00, 09/120/0611.00, 09/120/0612.00, 09/120/0613.00, 09/120/0614.00,
09/120/0615.00, 09/120/0616.00, 09/120/0701.00, 09/120/0702.00, 09/120/0703.00, 09/120/0704.00, 09/120/0705.00,
09/120/0706.00, 09/120/0709.00, 09/120/0710.00, 09/120/0711.00, 09/120/0712.00, 09/120/0713.00, 09/120/0714.00,
09/120/0716.00, 09/120/0719.00, 09/120/0720.00, 09/120/0721.00, 09/120/0722.00, 09/120/0723.00, 09/120/0724.00,
09/120/0725.00, 09/120/0726.00, 09/120/0727.00, 09/120/0728.00, 09/120/0729.00, 09/120/0730.00, 09/120/0731.00,
09/120/0732.00, 09/120/0733.00, 09/120/0734.00, 09/120/0735.00, 09/120/0736.00, 09/120/0737.00, 09/120/0738.00,
09/120/0739.00, 09/120/0740.00, 09/120/0743.00, 09/120/0744.00, 09/120/0801.00, 09/120/0802.00, 09/120/0804.00,
09/120/0805.00, 09/120/0806.00, 09/120/0807.00, 09/120/0808.00, 09/120/0809.00, 09/120/0810.00, 09/120/0811.00,
09/120/0812.00, 09/120/0813.00, 09/120/0901.00, 09/120/0902.00, 09/120/0903.00, 09/120/0904.00, 09/120/0905.00,
09/120/0906.00, 09/120/0907.00, 09/120/1001.00, 09/120/1002.00, 09/120/1003.00, 09/120/1051.00, 09/120/1052.00

09/190/0101.01, 09/190/0101.02, 09/190/0102.01, 09/190/0102.02, 09/190/0103.00, 09/190/0104.00,
09/190/0105.00, 09/190/0106.00, 09/190/0107.00, 09/190/0108.00, 09/190/0109.00, 09/190/0110.00, 09/190/0111.00,
09/190/0112.00, 09/190/0113.00, 09/190/0201.01, 09/190/0201.02, 09/190/0202.00, 09/190/0203.01, 09/190/0203.02,
09/190/0204.00, 09/190/0205.00, 09/190/0206.00, 09/190/0207.00, 09/190/0208.00, 09/190/0209.00, 09/190/0210.00,
09/190/0211.00, 09/190/0212.00, 09/190/0213.00, 09/190/0214.01, 09/190/0214.02, 09/190/0215.01, 09/190/0215.02,
09/190/0216.01, 09/190/0216.02, 09/190/0217.01, 09/190/0217.02, 09/190/0218.01, 09/190/0218.02, 09/190/0219.00,
09/190/0220.00, 09/190/0221.01, 09/190/0221.02, 09/190/0222.01, 09/190/0222.02, 09/190/0223.00, 09/190/0224.00,
09/190/0301.00, 09/190/0302.00, 09/190/0303.00, 09/190/0304.00, 09/190/0305.00, 09/190/0351.01, 09/190/0351.02,
09/190/0352.00, 09/190/0353.00, 09/190/0354.00, 09/190/0425.00, 09/190/0426.00, 09/190/0427.00, 09/190/0428.00,
09/190/0429.00, 09/190/0430.00, 09/190/0431.00, 09/190/0432.00, 09/190/0433.00, 09/190/0434.00, 09/190/0435.00,
09/190/0436.00, 09/190/0437.00, 09/190/0438.00, 09/190/0439.00, 09/190/0440.00, 09/190/0441.00, 09/190/0442.00

09/190/0443.00, 09/190/0444.00, 09/190/0445.00, 09/190/0446.00, 09/190/0451.01, 09/190/0451.02, 09/190/0452.00,
09/190/0453.00, 09/190/0454.00, 09/190/0501.00, 09/190/0502.00, 09/190/0503.01, 09/190/0503.02, 09/190/0504.00,
09/190/0505.00, 09/190/0506.00, 09/190/0551.00, 09/190/0552.00, 09/190/2001.00, 09/190/2002.00, 09/190/2003.01,
09/190/2003.02, 09/190/2051.00, 09/190/2052.00, 09/190/2053.00, 09/190/2101.01, 09/190/2101.02, 09/190/2102.01,
09/190/2102.02, 09/190/2103.00, 09/190/2104.01, 09/190/2104.02, 09/190/2105.01, 09/190/2105.02, 09/190/2106.00,
09/190/2107.01, 09/190/2107.02, 09/190/2108.00, 09/190/2109.00, 09/190/2110.00, 09/190/2111.00, 09/190/2112.01,
09/190/2112.02, 09/190/2113.00, 09/190/2114.00, 09/190/2201.00, 09/190/2202.00, 09/190/2203.00, 09/190/2301.00,
09/190/2302.00, 09/190/2303.00, 09/190/2304.00, 09/190/2305.01, 09/190/2305.02, 09/190/2401.00, 09/190/2402.00,
09/190/2451.00, 09/190/2452.00, 09/190/2453.00, 09/190/2454.00, 09/190/2455.00, 09/190/2456.00, 09/190/2501.00,
09/190/2531.00, 09/190/2532.00, 09/190/2534.00, 09/190/2535.00, 09/190/2571.00, 09/190/4257.00, 09/190/9900.00



A map of MSA 25540 Hartford-West Hartford-East Hartford CT

Income as % of the MSA Median: Upper-Income (83), Middle-Income (116), Moderate-Income (46), Low-Income (40), All Others (9)

Outline of the County Equivalent - shown in a pink outline, Tract 2020 - shown in a Black outline, Town - shown in a yellow outline, Water - shown in a blue outline, State - shown in a Black outline

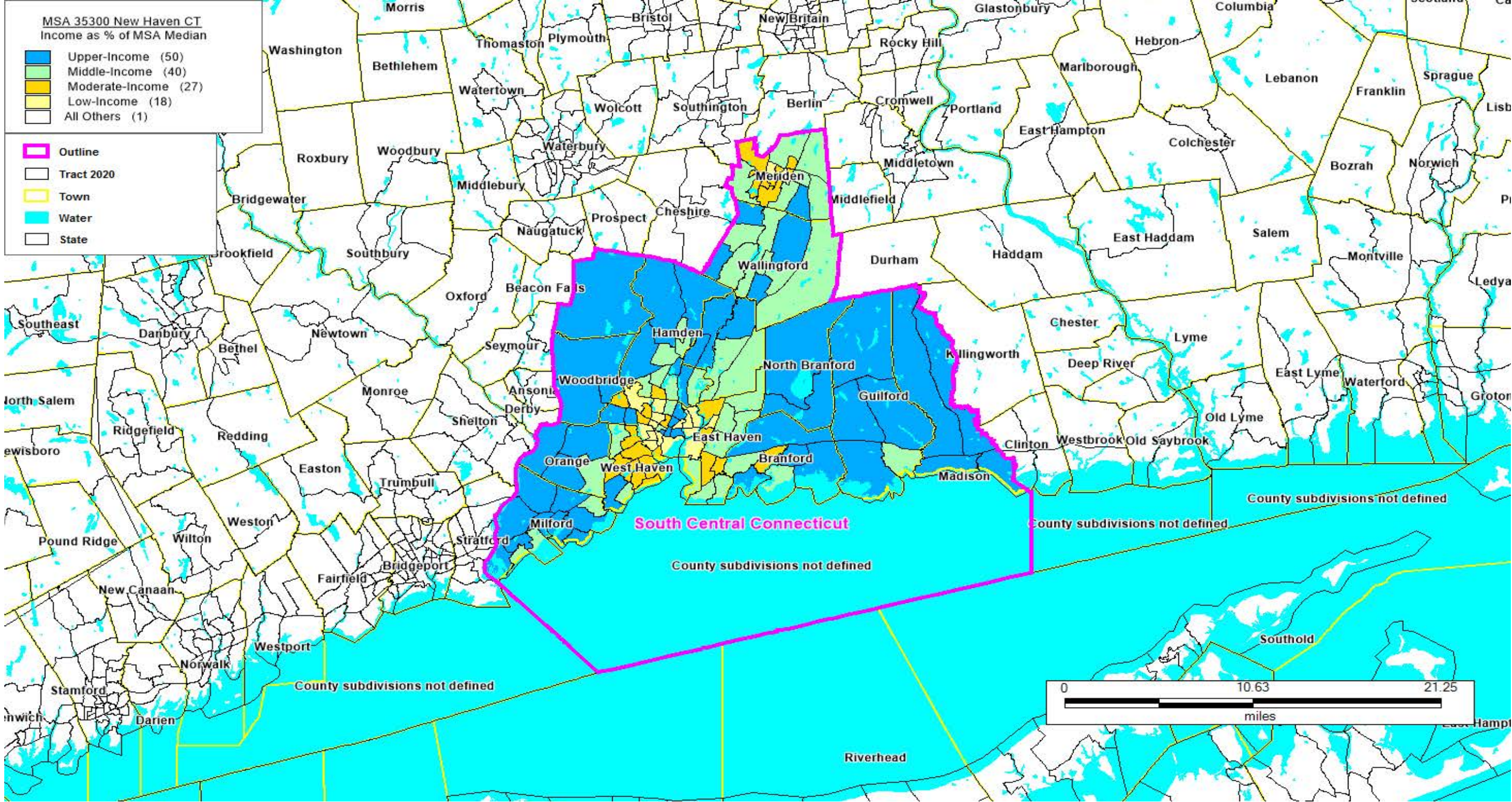
Disclaimer: The income tract level information has not been updated to reflect the MSA/MD delineation changes issued in 2023 as it has not been released by FFIEC at the time of this publication.

CONNECTICUT

MSA 25540 Hartford-W Hartford-E Hartford CT

FORMAT: STATECODE/COUNTYCODE/TRACTCODE

09/110/4001.01, 09/110/4001.02, 09/110/4002.00, 09/110/4003.00, 09/110/4153.00, 09/110/4154.00, 09/110/4155.00, 09/110/4156.00, 09/110/4157.00, 09/110/4158.00, 09/110/4159.00, 09/110/4160.00, 09/110/4161.00, 09/110/4162.00, 09/110/4163.00, 09/110/4164.00, 09/110/4165.00, 09/110/4166.00, 09/110/4167.00, 09/110/4168.00, 09/110/4171.00, 09/110/4172.00, 09/110/4173.00, 09/110/4174.00, 09/110/4175.00, 09/110/4204.00, 09/110/4205.00, 09/110/4206.01, 09/110/4206.02, 09/110/4207.00, 09/110/4301.00, 09/110/4302.01, 09/110/4302.02, 09/110/4302.03, 09/110/4303.01, 09/110/4303.02, 09/110/4304.00, 09/110/4305.01, 09/110/4305.02, 09/110/4306.02, 09/110/4306.03, 09/110/4306.04, 09/110/4601.00, 09/110/4602.02, 09/110/4602.03, 09/110/4602.04, 09/110/4603.01, 09/110/4603.02, 09/110/4621.01, 09/110/4621.02, 09/110/4622.01, 09/110/4622.02, 09/110/4641.01, 09/110/4641.02, 09/110/4661.01, 09/110/4661.02, 09/110/4662.01, 09/110/4662.02, 09/110/4663.00, 09/110/4664.00, 09/110/4681.01, 09/110/4681.02, 09/110/4701.00, 09/110/4711.00, 09/110/4712.00, 09/110/4713.00, 09/110/4714.00, 09/110/4715.00, 09/110/4731.00, 09/110/4734.00, 09/110/4735.01, 09/110/4735.02, 09/110/4736.01, 09/110/4736.02, 09/110/4737.00, 09/110/4738.00, 09/110/4761.00, 09/110/4762.00, 09/110/4763.00, 09/110/4771.01, 09/110/4771.03, 09/110/4771.04, 09/110/4772.00, 09/110/4803.00, 09/110/4804.00, 09/110/4805.00, 09/110/4806.00, 09/110/4807.00, 09/110/4808.00, 09/110/4809.00, 09/110/4810.00, 09/110/4811.00, 09/110/4812.00, 09/110/4813.00, 09/110/4841.00, 09/110/4842.00, 09/110/4871.00, 09/110/4872.01, 09/110/4872.02, 09/110/4873.00, 09/110/4874.00, 09/110/4875.00, 09/110/4901.00, 09/110/4903.03, 09/110/4903.04, 09/110/4921.00, 09/110/4922.00, 09/110/4923.00, 09/110/4924.00, 09/110/4925.00, 09/110/4926.00, 09/110/4941.00, 09/110/4942.01, 09/110/4942.02, 09/110/4943.00, 09/110/4944.00, 09/110/4945.00, 09/110/4946.00, 09/110/4961.00, 09/110/4962.00, 09/110/4963.00, 09/110/4964.00, 09/110/4965.00, 09/110/4966.00, 09/110/4967.00, 09/110/4968.00, 09/110/4969.00, 09/110/4970.00, 09/110/4971.00, 09/110/4972.00, 09/110/4973.00, 09/110/4974.00, 09/110/4975.00, 09/110/4976.00, 09/110/4977.00, 09/110/5001.00, 09/110/5002.00, 09/110/5003.00, 09/110/5004.00, 09/110/5005.00, 09/110/5009.00, 09/110/5012.00, 09/110/5013.00, 09/110/5014.00, 09/110/5015.00, 09/110/5017.00, 09/110/5018.00, 09/110/5021.00, 09/110/5023.00, 09/110/5024.00, 09/110/5025.00, 09/110/5026.00, 09/110/5027.00, 09/110/5028.00, 09/110/5029.00, 09/110/5030.00, 09/110/5031.01, 09/110/5031.02, 09/110/5033.00, 09/110/5035.00, 09/110/5037.00, 09/110/5038.00, 09/110/5039.00, 09/110/5040.00, 09/110/5041.00, 09/110/5042.00, 09/110/5043.00, 09/110/5045.00, 09/110/5048.00, 09/110/5049.00, 09/110/5101.00, 09/110/5102.00, 09/110/5103.00, 09/110/5104.00, 09/110/5105.00, 09/110/5106.00, 09/110/5107.00, 09/110/5108.00, 09/110/5109.00, 09/110/5110.00, 09/110/5111.00, 09/110/5112.00, 09/110/5113.00, 09/110/5114.00, 09/110/5141.01, 09/110/5141.03, 09/110/5141.04, 09/110/5142.00, 09/110/5143.00, 09/110/5144.00, 09/110/5145.00, 09/110/5146.00, 09/110/5147.00, 09/110/5148.00, 09/110/5149.00, 09/110/5150.00, 09/110/5151.01, 09/110/5151.02, 09/110/5152.00, 09/110/5201.00, 09/110/5202.01, 09/110/5202.02, 09/110/5203.01, 09/110/5203.02, 09/110/5204.00, 09/110/5205.01, 09/110/5241.00, 09/110/5242.00, 09/110/5243.00, 09/110/5244.00, 09/110/5245.01, 09/110/5245.02, 09/110/5246.00, 09/110/5247.00, 09/110/5261.01, 09/110/5261.02, 09/110/5281.00, 09/110/5291.00, 09/110/5301.00, 09/110/5302.00, 09/110/5303.01, 09/110/5303.02, 09/110/5304.00, 09/110/5305.00, 09/110/5306.00, 09/110/5331.02, 09/110/5331.03, 09/110/5331.04, 09/110/5351.01, 09/110/5351.02, 09/110/5352.00, 09/110/5381.00, 09/110/5382.01, 09/110/5382.02, 09/110/8401.00, 09/110/8501.00, 09/110/8502.00, 09/110/8601.00, 09/110/8811.00, 09/110/8812.00, 09/110/8813.00, 09/110/8815.00, 09/110/8901.00, 09/110/8902.02, 09/110/8902.04, 09/110/9800.01, 09/110/9800.02, 09/110/9800.03, 09/110/9801.00, 09/130/5411.00, 09/130/5412.00, 09/130/5413.01, 09/130/5413.02, 09/130/5414.01, 09/130/5414.02, 09/130/5415.00, 09/130/5416.00, 09/130/5417.00, 09/130/5420.00, 09/130/5421.00, 09/130/5422.00, 09/130/5501.00, 09/130/5502.01, 09/130/5502.02, 09/130/5601.00, 09/130/5602.00, 09/130/5701.00, 09/130/5702.00, 09/130/5703.00, 09/130/5801.00, 09/130/5851.00, 09/130/5901.01, 09/130/5901.02, 09/130/5951.01, 09/130/5951.02, 09/130/6001.00, 09/130/6101.00, 09/130/6102.00, 09/130/6103.00, 09/130/6104.00, 09/130/6201.00, 09/130/6301.01, 09/130/6301.02, 09/130/6401.00, 09/130/6501.00, 09/130/6601.01, 09/130/6601.03, 09/130/6601.04, 09/130/6701.00, 09/130/6702.00, 09/130/6801.01, 09/130/6801.02, 09/130/6802.00, 09/130/9901.00



A map of MSA 35300 New Haven CT

Income as % of the MSA Median: Upper-Income (50), Middle-Income (40), Moderate-Income (27), Low-Income (18), All Others (1)

Outline of the County Equivalent - shown in a pink outline, Tract 2020 - shown in a Black outline, Town - shown in a yellow outline, Water - shown in a blue outline, State - shown in a Black outline

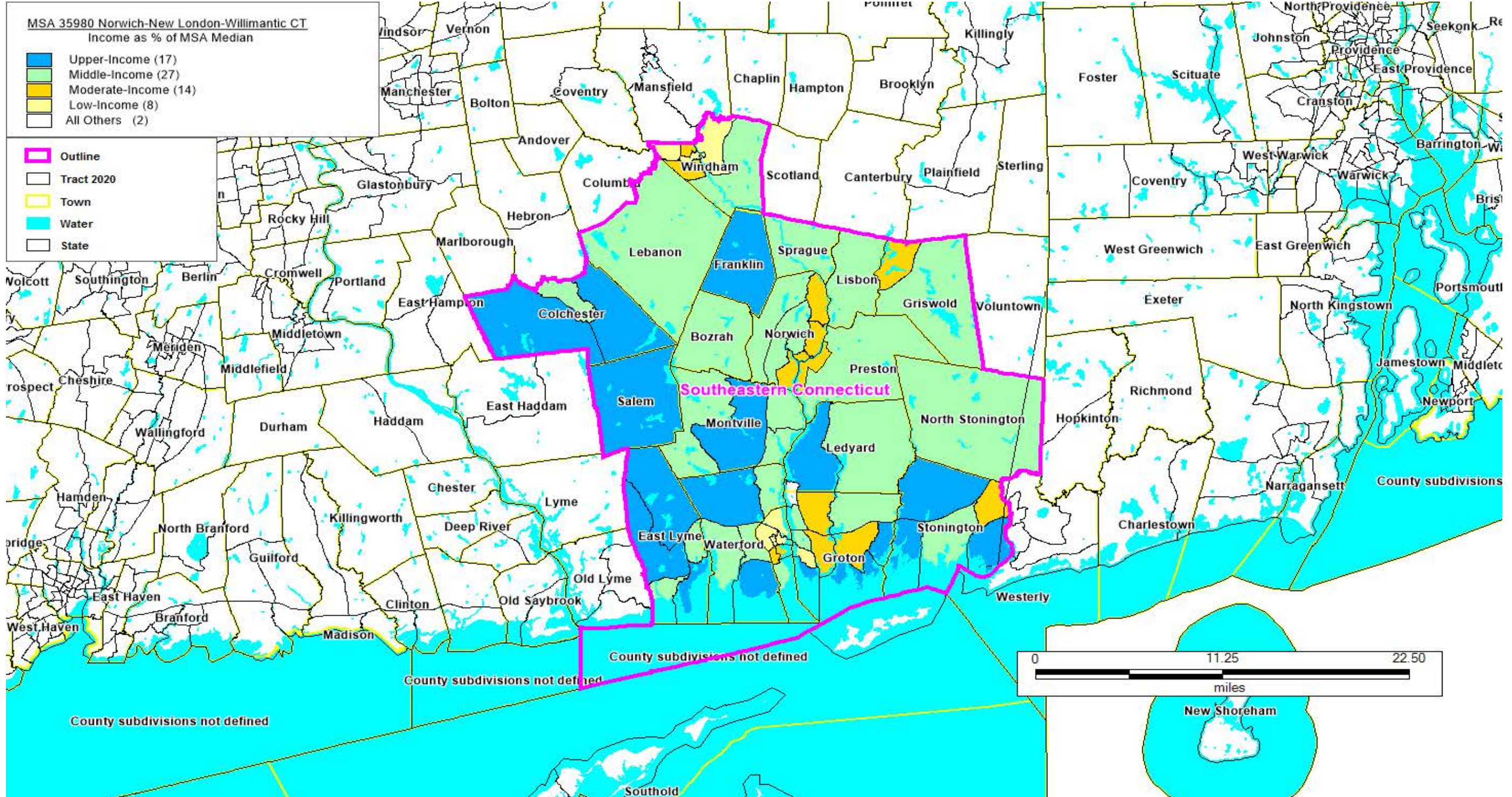
Disclaimer: The income tract level information has not been updated to reflect the MSA/MD delineation changes issued in 2023 as it has not been released by FFIEC at the time of this publication.

CONNECTICUT

MSA 35300 New Haven CT

FORMAT: STATECODE/COUNTYCODE/TRACTCODE

09/170/1401.01, 09/170/1401.02, 09/170/1402.00, 09/170/1403.00, 09/170/1404.00, 09/170/1405.00, 09/170/1406.00, 09/170/1407.00, 09/170/1408.00, 09/170/1409.00, 09/170/1410.00, 09/170/1411.00, 09/170/1412.00, 09/170/1413.01, 09/170/1414.00, 09/170/1415.00, 09/170/1416.00, 09/170/1418.00, 09/170/1419.00, 09/170/1420.00, 09/170/1421.00, 09/170/1422.00, 09/170/1423.00, 09/170/1424.00, 09/170/1425.00, 09/170/1426.01, 09/170/1426.04, 09/170/1426.05, 09/170/1427.00, 09/170/1428.00, 09/170/1501.00, 09/170/1502.00, 09/170/1503.00, 09/170/1504.00, 09/170/1505.00, 09/170/1506.00, 09/170/1507.00, 09/170/1508.00, 09/170/1509.00, 09/170/1510.00, 09/170/1511.00, 09/170/1512.00, 09/170/1541.01, 09/170/1541.02, 09/170/1542.00, 09/170/1545.00, 09/170/1546.00, 09/170/1547.00, 09/170/1548.00, 09/170/1549.00, 09/170/1550.00, 09/170/1551.00, 09/170/1571.00, 09/170/1572.00, 09/170/1573.00, 09/170/1574.00, 09/170/1601.00, 09/170/1602.00, 09/170/1611.00, 09/170/1651.00, 09/170/1652.00, 09/170/1653.00, 09/170/1654.00, 09/170/1655.00, 09/170/1656.00, 09/170/1657.00, 09/170/1658.01, 09/170/1658.02, 09/170/1659.00, 09/170/1660.02, 09/170/1660.03, 09/170/1660.04, 09/170/1671.01, 09/170/1671.02, 09/170/1672.01, 09/170/1672.02, 09/170/1673.01
09/170/1701.00, 09/170/1702.00, 09/170/1703.00, 09/170/1704.00, 09/170/1705.00, 09/170/1706.00, 09/170/1707.00, 09/170/1708.00, 09/170/1709.00, 09/170/1710.00, 09/170/1711.00, 09/170/1712.01, 09/170/1712.02, 09/170/1713.00, 09/170/1714.00, 09/170/1715.00, 09/170/1716.00, 09/170/1717.00, 09/170/1751.00, 09/170/1752.00, 09/170/1753.00, 09/170/1754.00, 09/170/1755.01, 09/170/1755.02, 09/170/1756.00, 09/170/1757.00, 09/170/1758.00, 09/170/1759.00, 09/170/1760.00, 09/170/1801.01, 09/170/1801.02, 09/170/1802.00, 09/170/1803.00, 09/170/1804.00, 09/170/1805.00, 09/170/1806.01, 09/170/1806.02, 09/170/1841.01, 09/170/1842.00, 09/170/1843.00, 09/170/1844.00, 09/170/1845.00, 09/170/1846.00, 09/170/1847.00, 09/170/1861.00, 09/170/1862.00, 09/170/1901.00, 09/170/1902.00, 09/170/1903.01, 09/170/1903.02, 09/170/1903.03, 09/170/1941.01, 09/170/1941.02, 09/170/1942.01, 09/170/1942.02, 09/170/3614.01, 09/170/3614.02, 09/170/3615.00, 09/170/9900.00



A map of MSA 35980 Norwich-New London-Willimantic CT

Income as % of the MSA Median: Upper-Income (17), Middle-Income (27), Moderate-Income (14), Low-Income (8), All Others (2)

Outline of the County Equivalent - shown in a pink outline, Tract 2020 - shown in a Black outline, Town - shown in a yellow outline, Water - shown in a blue outline, State - shown in a Black outline

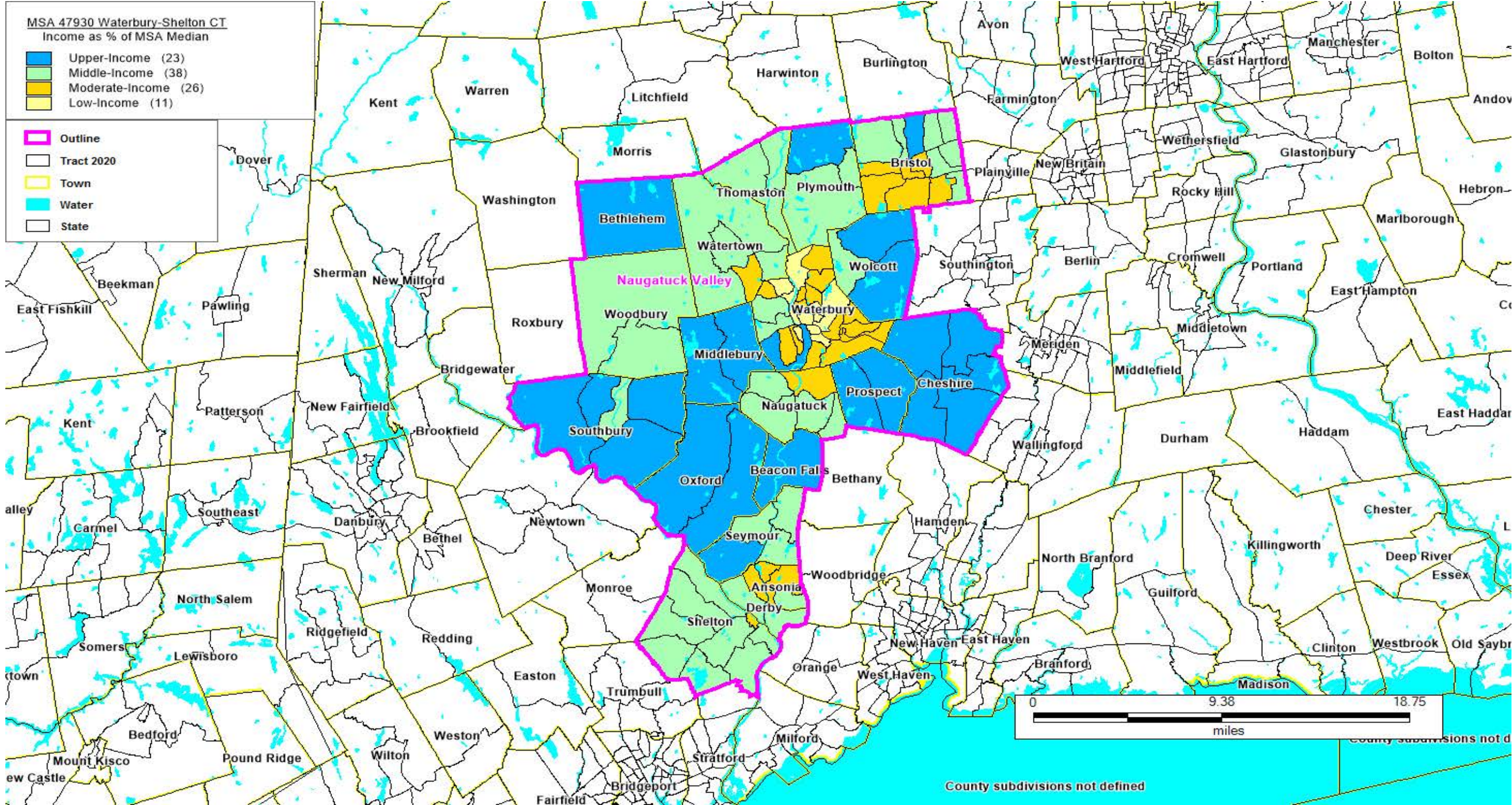
Disclaimer: The income tract level information has not been updated to reflect the MSA/MD delineation changes issued in 2023 as it has not been released by FFIEC at the time of this publication.

CONNECTICUT

MSA 35980 Norwich-New London-Willimantic CT

FORMAT: STATECODE/COUNTYCODE/TRACTCODE

09/180/6903.00, 09/180/6904.00, 09/180/6905.00, 09/180/6907.00, 09/180/6908.00, 09/180/6909.00, 09/180/6933.00,
09/180/6934.00, 09/180/6935.00, 09/180/6936.00, 09/180/6937.00, 09/180/6952.01, 09/180/6952.02, 09/180/6961.00,
09/180/6962.00, 09/180/6963.00, 09/180/6964.01, 09/180/6965.00, 09/180/6966.00, 09/180/6967.01, 09/180/6968.00,
09/180/6970.00, 09/180/7001.00, 09/180/7011.00, 09/180/7012.00, 09/180/7021.00, 09/180/7023.00, 09/180/7024.00,
09/180/7025.00, 09/180/7026.00, 09/180/7027.00, 09/180/7028.00, 09/180/7029.00, 09/180/7030.00, 09/180/7051.01,
09/180/7051.02, 09/180/7052.00, 09/180/7053.00, 09/180/7054.00, 09/180/7071.00, 09/180/7091.00, 09/180/7092.00,
09/180/7101.00, 09/180/7111.00, 09/180/7121.00, 09/180/7131.00, 09/180/7141.01, 09/180/7141.03, 09/180/7141.04,
09/180/7151.00, 09/180/7161.01, 09/180/7161.02, 09/180/8701.00, 09/180/8702.00, 09/180/8703.00, 09/180/8705.01,
09/180/8705.02, 09/180/8707.01, 09/180/8707.03, 09/180/8707.04, 09/180/9800.00, 09/180/9901.00



A map of MSA 47930 Waterbury-Shelton CT
Income as % of the MSA Median: Upper-Income (23), Middle-Income (38), Moderate-Income (26), Low-Income (11)

Outline of the County Equivalent - shown in a pink outline, Tract 2020 - shown in a Black outline, Town - shown in a yellow outline, Water - shown in a blue outline, State - shown in a Black outline

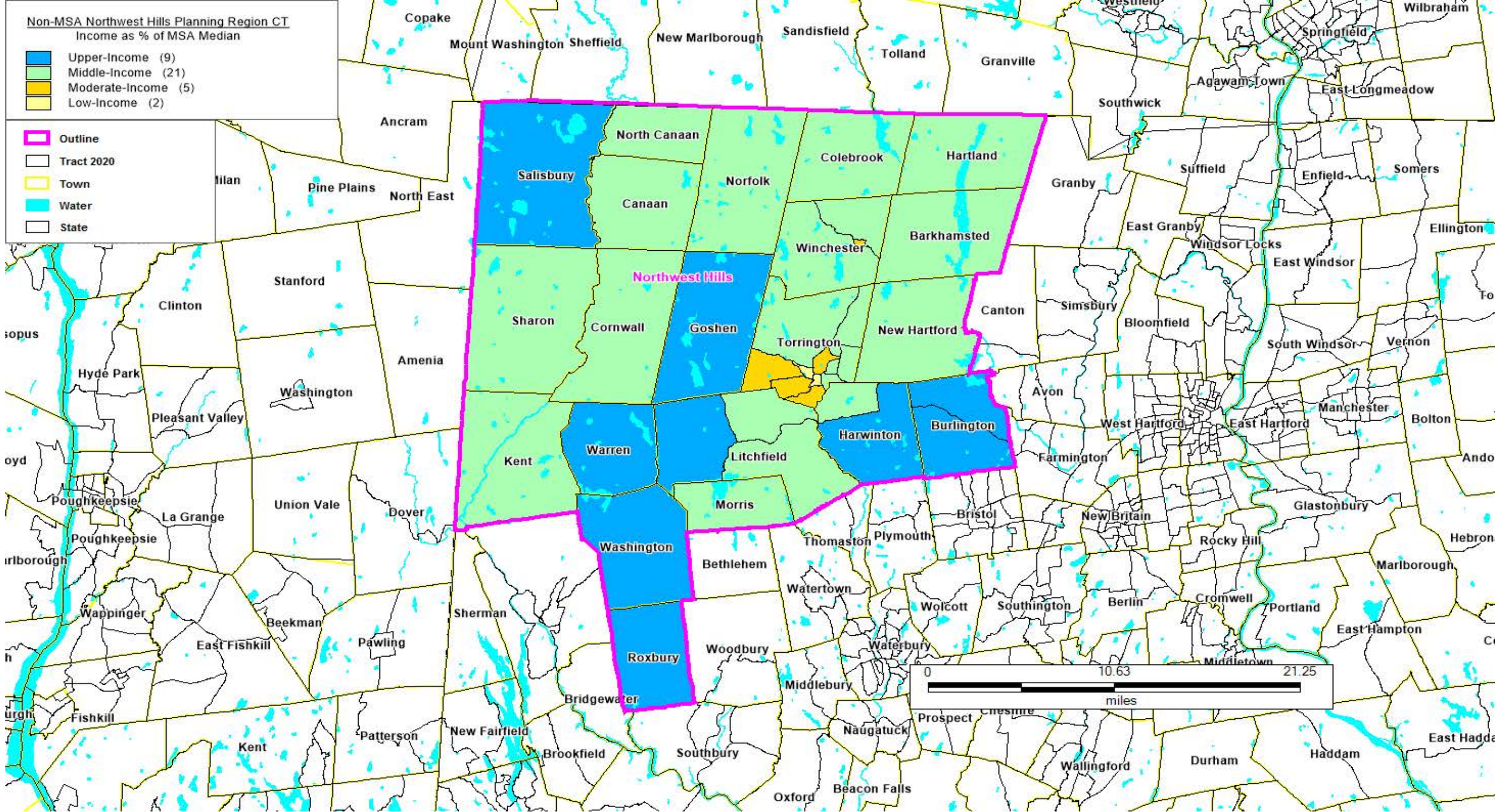
Disclaimer: The income tract level information has not been updated to reflect the MSA/MD delineation changes issued in 2023 as it has not been released by FFIEC at the time of this publication.

CONNECTICUT

MSA 47930 Waterbury-Shelton CT

FORMAT: STATECODE/COUNTYCODE/TRACTCODE

09/140/1101.00, 09/140/1102.01, 09/140/1102.02, 09/140/1103.01, 09/140/1103.02, 09/140/1104.00, 09/140/1105.00,
09/140/1106.01, 09/140/1106.02, 09/140/1201.00, 09/140/1202.00, 09/140/1251.00, 09/140/1252.00, 09/140/1253.00,
09/140/1254.00, 09/140/1301.01, 09/140/1301.02, 09/140/1302.01, 09/140/1302.02, 09/140/3411.00, 09/140/3421.00,
09/140/3431.01, 09/140/3431.02, 09/140/3432.00, 09/140/3433.00, 09/140/3434.00, 09/140/3441.00, 09/140/3442.00,
09/140/3451.00, 09/140/3452.01, 09/140/3452.02, 09/140/3453.00, 09/140/3454.00, 09/140/3461.01, 09/140/3461.02,
09/140/3471.00, 09/140/3472.00, 09/140/3481.11, 09/140/3481.22, 09/140/3481.23, 09/140/3481.24, 09/140/3481.25,
09/140/3491.00, 09/140/3492.00, 09/140/3501.01, 09/140/3502.00, 09/140/3503.00, 09/140/3504.00, 09/140/3505.00,
09/140/3508.00, 09/140/3509.00, 09/140/3510.00, 09/140/3511.00, 09/140/3512.00, 09/140/3513.00, 09/140/3514.00,
09/140/3515.00, 09/140/3516.01, 09/140/3516.02, 09/140/3517.00, 09/140/3518.00, 09/140/3519.00, 09/140/3520.00,
09/140/3521.00, 09/140/3522.00, 09/140/3523.00, 09/140/3524.00, 09/140/3525.00, 09/140/3526.00, 09/140/3527.01,
09/140/3527.02, 09/140/3528.00, 09/140/3601.00, 09/140/3602.00, 09/140/3603.00, 09/140/3604.00, 09/140/3611.00
09/140/3612.00, 09/140/3613.00, 09/140/3621.01, 09/140/3621.02, 09/140/4051.00, 09/140/4052.00, 09/140/4053.00,
09/140/4054.01, 09/140/4054.02, 09/140/4055.00, 09/140/4056.00, 09/140/4057.00, 09/140/4058.01, 09/140/4058.02,
09/140/4059.00, 09/140/4060.01, 09/140/4060.02, 09/140/4061.00, 09/140/4253.00, 09/140/4254.00, 09/140/4255.00



A map of Non-MSA Northwest Hills Planning Region CT

Income as % of the MSA Median: Upper-Income (9), Middle-Income (21), Moderate-Income (5), Low-Income (2)

Outline of the County Equivalent - shown in a pink outline, Tract 2020 - shown in a Black outline, Town - shown in a yellow outline, Water - shown in a blue outline, State - shown in a Black outline

Disclaimer: The income tract level information has not been updated to reflect the MSA/MD delineation changes issued in 2023 as it has not been released by FFIEC at the time of this publication.

CONNECTICUT

Non-MSA Northwest Hills Planning Region CT

FORMAT: STATECODE/COUNTYCODE/TRACTCODE

09/160/2602.00, 09/160/2611.00, 09/160/2621.00, 09/160/2632.00, 09/160/2651.00, 09/160/2661.00, 09/160/2671.00,
09/160/2681.00, 09/160/2901.00, 09/160/2931.00, 09/160/2961.00, 09/160/2983.00, 09/160/2984.00, 09/160/3001.00,
09/160/3004.00, 09/160/3005.00, 09/160/3031.00, 09/160/3061.00, 09/160/3101.00, 09/160/3102.00, 09/160/3103.00,
09/160/3104.00, 09/160/3105.00, 09/160/3106.01, 09/160/3106.02, 09/160/3107.00, 09/160/3108.01, 09/160/3108.03,
09/160/3108.04, 09/160/3201.01, 09/160/3201.02, 09/160/3202.00, 09/160/3301.00, 09/160/4101.01, 09/160/4101.02,
09/160/4256.01, 09/160/4256.02