

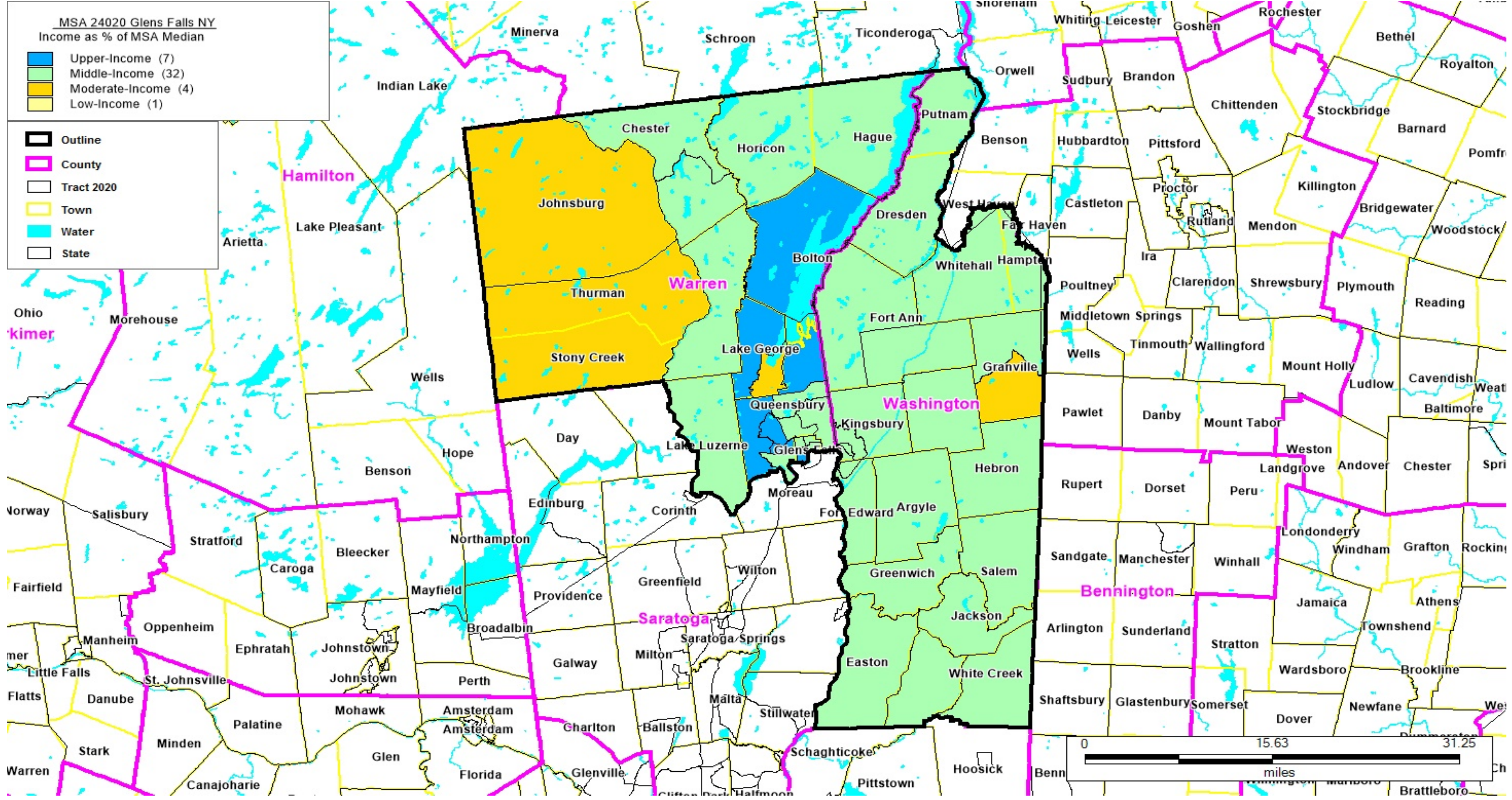
A map of MSA 10580 Albany-Schenectady-Troy NY (Partial)
 Income as % of the MSA Median: Upper-Income (57), Middle-Income (94), Moderate-Income (33), Low-Income (18), All Others (6)
 Outline - shown in a Black outline, County - shown in a pink outline, Tract 2020 - shown in a Black outline, Town - shown in a yellow outline, Water - shown in a blue outline,
 State - shown in a Black outline

NEW YORK

MSA 10580 Albany-Schenectady-Troy NY (Partial)

FORMAT: STATECODE/COUNTYCODE/TRACTCODE

36/001/0001.00, 36/001/0002.01, 36/001/0002.02, 36/001/0003.01, 36/001/0003.02, 36/001/0004.01, 36/001/0004.03, 36/001/0004.04, 36/001/0005.01, 36/001/0005.02, 36/001/0006.00, 36/001/0007.00, 36/001/0008.00, 36/001/0011.00, 36/001/0014.00, 36/001/0015.00, 36/001/0016.00, 36/001/0017.00, 36/001/0018.02, 36/001/0018.03, 36/001/0018.04, 36/001/0019.01, 36/001/0019.02, 36/001/0020.00, 36/001/0021.00, 36/001/0022.00, 36/001/0023.00, 36/001/0025.00, 36/001/0026.00, 36/001/0127.00, 36/001/0128.00, 36/001/0129.00, 36/001/0130.00, 36/001/0131.00, 36/001/0132.00, 36/001/0133.00, 36/001/0134.00, 36/001/0135.03, 36/001/0135.05, 36/001/0135.07, 36/001/0135.09, 36/001/0135.10, 36/001/0135.11, 36/001/0135.12, 36/001/0136.02, 36/001/0136.03, 36/001/0136.04, 36/001/0137.03, 36/001/0137.06, 36/001/0137.07, 36/001/0137.08, 36/001/0137.09, 36/001/0138.02, 36/001/0138.03, 36/001/0138.04, 36/001/0139.01, 36/001/0139.02, 36/001/0140.01, 36/001/0140.02, 36/001/0141.00, 36/001/0142.01, 36/001/0142.02, 36/001/0142.03, 36/001/0143.01, 36/001/0143.03, 36/001/0143.04, 36/001/0144.01, 36/001/0144.02, 36/001/0145.01, 36/001/0145.02, 36/001/0145.03, 36/001/0146.06, 36/001/0146.08, 36/001/0146.09, 36/001/0146.11, 36/001/0146.12, 36/001/0146.13, 36/001/0146.14, 36/001/0146.15, 36/001/0146.16, 36/001/0146.17, 36/001/0147.00, 36/001/0148.01, 36/001/0148.02, 36/001/0148.03, 36/083/0515.00, 36/083/0516.01, 36/083/0516.02, 36/083/0523.01, 36/083/0523.03, 36/083/0523.05, 36/083/0523.06, 36/083/0524.02, 36/083/0524.05, 36/083/0524.06, 36/083/0524.07, 36/083/0524.08, 36/083/0525.01, 36/083/0525.02, 36/083/0525.03, 36/091/0601.02, 36/091/0601.03, 36/091/0601.04, 36/091/0602.00, 36/091/0603.01, 36/091/0604.00, 36/091/0605.01, 36/091/0605.04, 36/091/0605.05, 36/091/0605.06, 36/091/0605.07, 36/091/0606.01, 36/091/0606.02, 36/091/0607.03, 36/091/0607.04, 36/091/0607.05, 36/091/0607.06, 36/091/0608.00, 36/091/0609.01, 36/091/0609.02, 36/091/0610.01, 36/091/0610.02, 36/091/0611.01, 36/091/0611.02, 36/091/0612.01, 36/091/0612.02, 36/091/0613.01, 36/091/0613.03, 36/091/0613.04, 36/091/0613.05, 36/091/0614.01, 36/091/0614.03, 36/091/0614.04, 36/091/0615.00, 36/091/0616.00, 36/091/0617.01, 36/091/0617.02, 36/091/0618.00, 36/091/0619.04, 36/091/0619.05, 36/091/0619.06, 36/091/0619.07, 36/091/0620.01, 36/091/0620.02, 36/091/0621.00, 36/091/0622.00, 36/091/0623.00, 36/091/0624.04, 36/091/0624.06, 36/091/0624.07, 36/091/0624.08, 36/091/0624.09, 36/091/0624.10, 36/091/0625.01, 36/091/0625.03, 36/091/0625.05, 36/091/0625.06, 36/091/0625.07, 36/091/0625.08, 36/091/0625.09, 36/091/0626.01, 36/091/0626.02, 36/091/0627.00, 36/091/0628.00, 36/091/0629.00, 36/093/0201.01, 36/093/0201.02, 36/093/0202.00, 36/093/0203.00, 36/093/0205.00, 36/093/0206.00, 36/093/0207.00, 36/093/0208.00, 36/093/0209.00, 36/093/0210.01, 36/093/0210.02, 36/093/0212.00, 36/093/0214.00, 36/093/0215.00, 36/093/0216.00, 36/093/0217.00, 36/093/0218.01, 36/093/0218.02, 36/093/0319.01, 36/093/0319.02, 36/093/0320.00, 36/093/0321.01, 36/093/0321.02, 36/093/0322.00, 36/093/0323.00, 36/093/0324.02, 36/093/0324.03, 36/093/0324.04, 36/093/0325.02, 36/093/0325.03, 36/093/0325.04, 36/093/0326.01, 36/093/0326.02, 36/093/0327.00, 36/093/0329.01, 36/093/0329.02, 36/093/0330.02, 36/093/0330.03, 36/093/0330.04, 36/093/0332.00, 36/093/0333.00, 36/093/0334.00, 36/093/0335.00



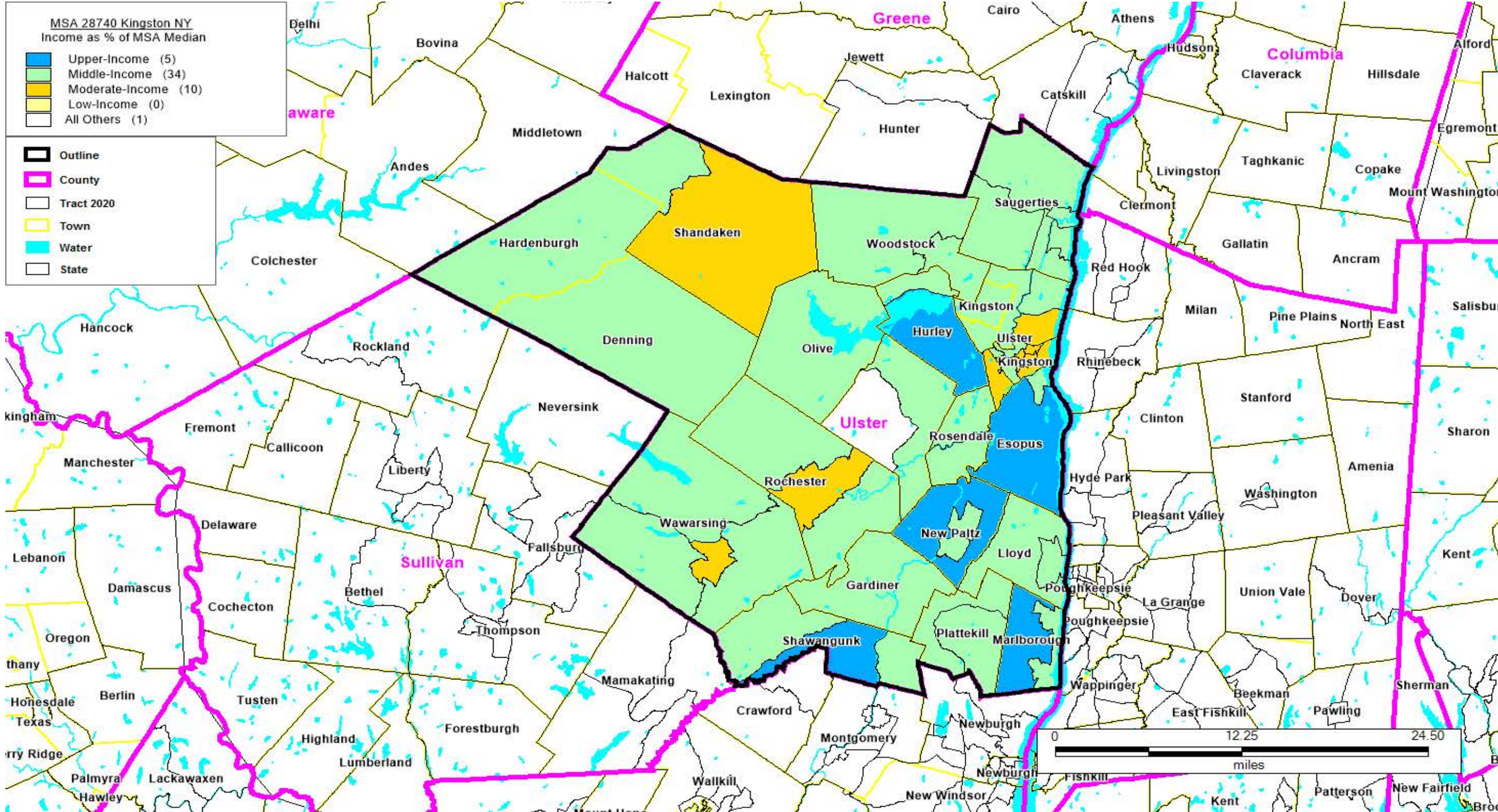
A map of MSA 24020 Glens Falls NY
Income as % of the MSA Median: Upper-Income (7), Middle-Income (32), Moderate-Income (4), Low-Income (1)
Outline - shown in a Black outline, County - shown in a pink outline, Tract 2020 - shown in a Black outline, Town - shown in a yellow outline, Water - shown in a blue outline, State - shown in a Black outline

NEW YORK

MSA 24020 Glens Falls NY

FORMAT: STATECODE/COUNTYCODE/TRACTCODE

36/113/0701.00, 36/113/0702.00, 36/113/0703.00, 36/113/0704.00, 36/113/0705.00, 36/113/0706.02, 36/113/0706.03,
36/113/0706.04, 36/113/0707.01, 36/113/0707.02, 36/113/0708.01, 36/113/0708.02, 36/113/0709.00, 36/113/0710.00,
36/113/0720.01, 36/113/0720.02, 36/113/0730.00, 36/113/0735.00, 36/113/0740.00, 36/113/0750.01, 36/113/0750.02,
36/113/0760.00, 36/113/0780.00, 36/115/0801.00, 36/115/0802.00, 36/115/0803.01, 36/115/0803.02, 36/115/0810.01,
36/115/0810.02, 36/115/0820.01, 36/115/0820.02, 36/115/0840.01, 36/115/0840.02, 36/115/0850.00, 36/115/0860.00,
36/115/0870.00, 36/115/0880.01, 36/115/0880.02, 36/115/0890.00, 36/115/0900.00, 36/115/0910.00, 36/115/0920.00,
36/115/0930.00, 36/115/0940.00



A map of MSA 28740 Kingston NY
Income as % of the MSA Median: Upper-Income (5), Middle-Income (34), Moderate-Income (10), Low-Income (0), All Others (1)
Outline - shown in a Black outline, County - shown in a pink outline, Tract 2020 - shown in a Black outline, Town - shown in a yellow outline, Water - shown in a blue outline, State - shown in a Black outline

NEW YORK

MSA 28740 Kingston NY

FORMAT: STATECODE/COUNTYCODE/TRACTCODE

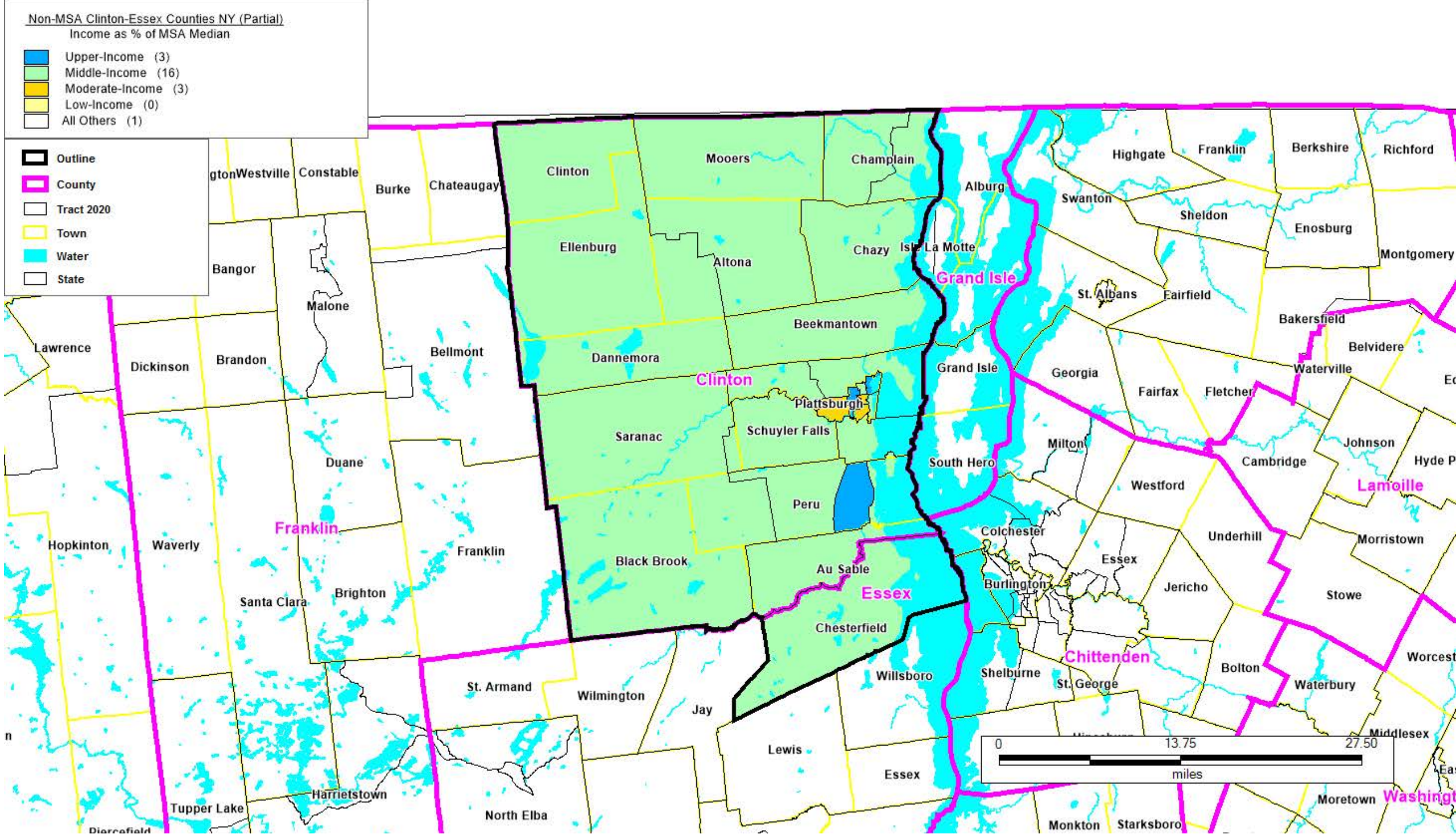
36/111/9501.00, 36/111/9502.00, 36/111/9503.00, 36/111/9504.00, 36/111/9505.00, 36/111/9506.00, 36/111/9509.00,
36/111/9510.00, 36/111/9511.00, 36/111/9512.00, 36/111/9513.00, 36/111/9514.00, 36/111/9515.00, 36/111/9516.00,
36/111/9517.00, 36/111/9518.00, 36/111/9519.00, 36/111/9520.00, 36/111/9521.00, 36/111/9522.00, 36/111/9523.00,
36/111/9524.00, 36/111/9525.00, 36/111/9526.00, 36/111/9527.00, 36/111/9528.00, 36/111/9529.01, 36/111/9529.02,
36/111/9530.00, 36/111/9533.00, 36/111/9534.00, 36/111/9535.00, 36/111/9536.00, 36/111/9537.00, 36/111/9538.00,
36/111/9539.00, 36/111/9540.00, 36/111/9541.00, 36/111/9542.00, 36/111/9544.01, 36/111/9544.02, 36/111/9545.00,
36/111/9546.00, 36/111/9547.00, 36/111/9548.00, 36/111/9549.00, 36/111/9550.01, 36/111/9550.02, 36/111/9553.00,
36/111/9554.00

NEW YORK

MSA 28880 Kiryas Joel-Poughkeepsie-Newbrgh NY

FORMAT: STATECODE/COUNTYCODE/TRACTCODE

36/027/0100.00, 36/027/0200.03, 36/027/0200.04, 36/027/0200.05, 36/027/0300.00, 36/027/0400.01, 36/027/0400.03,
36/027/0501.02, 36/027/0501.03, 36/027/0501.04, 36/027/0502.03, 36/027/0502.04, 36/027/0502.05, 36/027/0601.00,
36/027/0602.01, 36/027/0602.02, 36/027/0603.01, 36/027/0603.02, 36/027/0604.00, 36/027/0701.01, 36/027/0701.02,
36/027/0702.01, 36/027/0703.01, 36/027/0704.01, 36/027/0801.03, 36/027/0801.04, 36/027/0802.01, 36/027/0802.02,
36/027/0900.00, 36/027/1000.00, 36/027/1100.03, 36/027/1100.04, 36/027/1100.05, 36/027/1200.00, 36/027/1300.03,
36/027/1300.04, 36/027/1300.05, 36/027/1401.01, 36/027/1402.01, 36/027/1402.02, 36/027/1403.01, 36/027/1403.02,
36/027/1404.00, 36/027/1405.00, 36/027/1406.02, 36/027/1407.00, 36/027/1408.01, 36/027/1500.03, 36/027/1500.04,
36/027/1500.05, 36/027/1500.06, 36/027/1600.03, 36/027/1600.04, 36/027/1600.05, 36/027/1700.00, 36/027/1800.01,
36/027/1901.01, 36/027/1901.02, 36/027/1902.03, 36/027/1902.04, 36/027/1903.01, 36/027/1904.01, 36/027/1904.02,
36/027/2000.01, 36/027/2000.02, 36/027/2101.01, 36/027/2102.01, 36/027/2103.01, 36/027/2201.01, 36/027/2201.02,
36/027/2202.01, 36/027/2203.00, 36/027/2207.00, 36/027/2208.01, 36/027/2209.01, 36/027/2210.01, 36/027/2211.00
36/027/3000.00, 36/027/4100.00, 36/027/6100.00, 36/027/6400.01, 36/027/6400.02, 36/071/0001.00, 36/071/0002.00,
36/071/0003.01, 36/071/0003.02, 36/071/0004.00, 36/071/0005.01, 36/071/0005.02, 36/071/0006.00, 36/071/0011.00,
36/071/0012.00, 36/071/0013.00, 36/071/0015.00, 36/071/0016.01, 36/071/0016.02, 36/071/0021.00, 36/071/0022.00,
36/071/0023.00, 36/071/0101.01, 36/071/0101.02, 36/071/0102.00, 36/071/0103.00, 36/071/0104.00, 36/071/0105.01,
36/071/0105.02, 36/071/0106.01, 36/071/0106.02, 36/071/0107.01, 36/071/0107.02, 36/071/0108.01, 36/071/0108.02,
36/071/0109.01, 36/071/0109.02, 36/071/0110.00, 36/071/0111.01, 36/071/0111.02, 36/071/0112.00, 36/071/0113.01,
36/071/0113.02, 36/071/0114.00, 36/071/0115.00, 36/071/0116.01, 36/071/0116.02, 36/071/0117.01, 36/071/0117.02,
36/071/0118.01, 36/071/0118.02, 36/071/0119.00, 36/071/0121.00, 36/071/0122.00, 36/071/0123.00, 36/071/0126.01,
36/071/0126.02, 36/071/0127.00, 36/071/0128.00, 36/071/0129.00, 36/071/0130.00, 36/071/0131.00, 36/071/0132.01,
36/071/0132.02, 36/071/0133.01, 36/071/0133.02, 36/071/0134.00, 36/071/0135.00, 36/071/0136.00, 36/071/0137.00,
36/071/0138.00, 36/071/0139.00, 36/071/0141.01, 36/071/0141.02, 36/071/0142.01, 36/071/0142.02, 36/071/0143.01
36/071/0143.02, 36/071/0144.00, 36/071/0145.01, 36/071/0145.02, 36/071/0146.01, 36/071/0146.02, 36/071/0147.00,
36/071/0148.01, 36/071/0148.02, 36/071/0149.00, 36/071/0150.03, 36/071/0150.05, 36/071/0150.07, 36/071/0150.08,
36/071/0150.09, 36/071/0150.10, 36/071/0151.00, 36/071/0152.01, 36/071/0152.02, 36/071/0152.03



A map of Non-MSA Clinton-Essex Counties NY (Partial)

Income as % of the MSA Median: Upper-Income (3), Middle-Income (16), Moderate-Income (3), Low-Income (0), All Others (1)

Outline - shown in a Black outline, County - shown in a pink outline, Tract 2020 - shown in a Black outline, Town - shown in a yellow outline, Water - shown in a blue outline, State - shown in a Black outline

NEW YORK

Non-MSA Clinton-Essex Counties NY (Partial)

FORMAT: STATECODE/COUNTYCODE/TRACTCODE

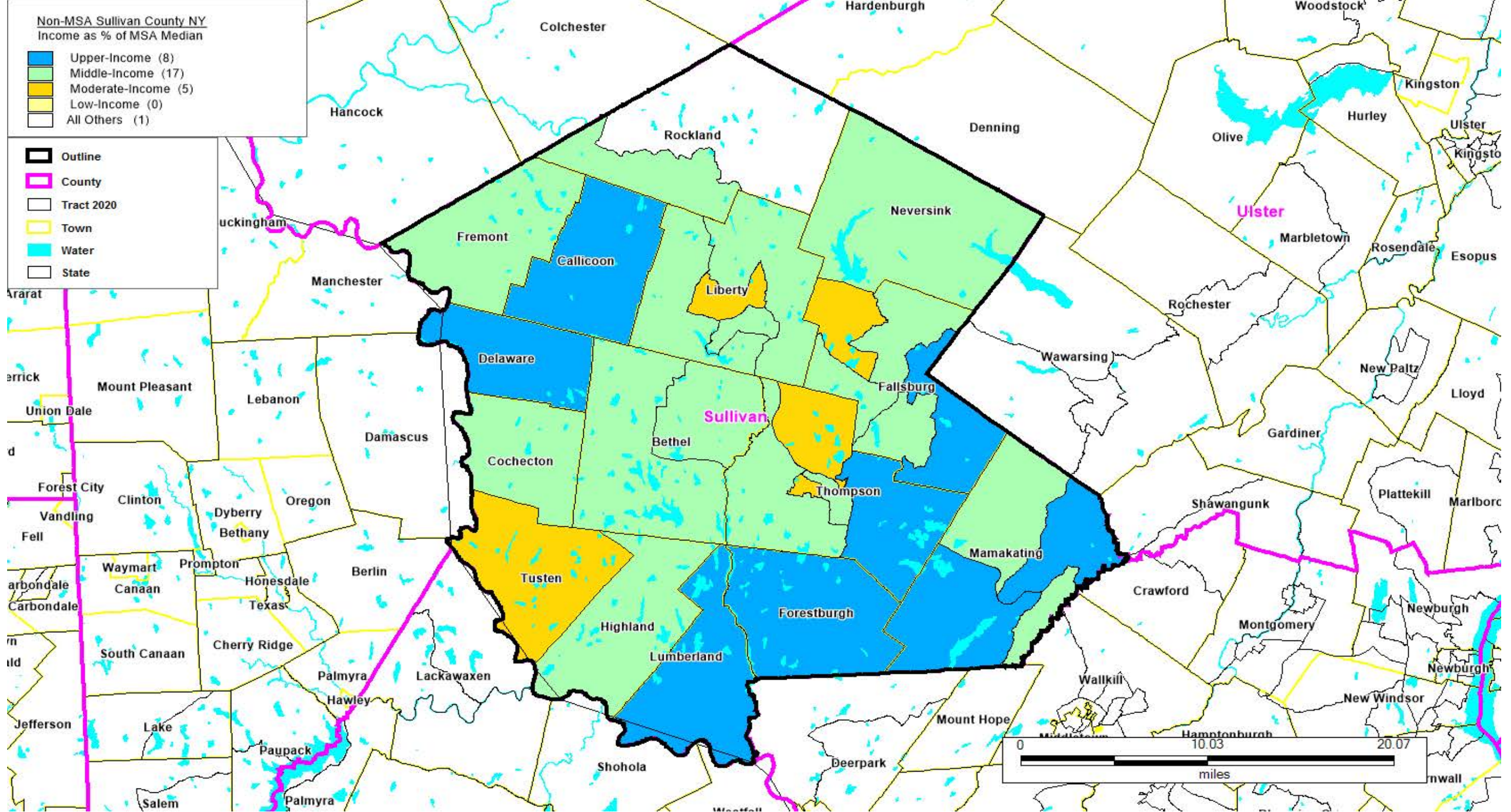
36/019/1001.01, 36/019/1001.02, 36/019/1002.00, 36/019/1006.00, 36/019/1007.00, 36/019/1008.00, 36/019/1009.01,
36/019/1009.02, 36/019/1010.00, 36/019/1016.00, 36/019/1019.01, 36/019/1019.02, 36/019/1021.00, 36/019/1022.00,
36/019/1028.00, 36/019/1030.00, 36/019/1031.00, 36/019/1032.00, 36/019/1035.12, 36/019/1038.00, 36/019/1039.00,
36/019/1042.00, 36/031/9601.00

NEW YORK

Non-MSA Columbia County NY

FORMAT: STATECODE/COUNTYCODE/TRACTCODE

36/021/0001.00, 36/021/0002.00, 36/021/0003.00, 36/021/0004.01, 36/021/0004.02, 36/021/0005.00, 36/021/0006.00,
36/021/0007.00, 36/021/0008.00, 36/021/0009.00, 36/021/0010.00, 36/021/0011.00, 36/021/0012.00, 36/021/0013.00,
36/021/0014.00, 36/021/0015.00, 36/021/0016.00, 36/021/0017.00, 36/021/0018.00, 36/021/0019.00, 36/021/0020.00



A map of Non-MSA Sullivan County NY

Income as % of the MSA Median: Upper-Income (8), Middle-Income (17), Moderate-Income (5), Low-Income (0), All Others (1)

Outline - shown in a Black outline, County - shown in a pink outline, Tract 2020 - shown in a Black outline, Town - shown in a yellow outline, Water - shown in a blue outline, State - shown in a Black outline

NEW YORK

Non-MSA Sullivan County NY

FORMAT: STATECODE/COUNTYCODE/TRACTCODE

36/105/9501.00, 36/105/9502.01, 36/105/9502.02, 36/105/9503.00, 36/105/9504.00, 36/105/9505.00, 36/105/9506.00,
36/105/9507.01, 36/105/9507.02, 36/105/9508.01, 36/105/9508.02, 36/105/9509.00, 36/105/9510.00, 36/105/9511.00,
36/105/9512.01, 36/105/9512.02, 36/105/9513.01, 36/105/9513.02, 36/105/9515.00, 36/105/9516.00, 36/105/9517.01,
36/105/9517.02, 36/105/9518.01, 36/105/9518.02, 36/105/9519.00, 36/105/9520.00, 36/105/9521.00, 36/105/9522.00,
36/105/9523.00, 36/105/9524.00, 36/105/9525.00