

A map of MSA 35840 North Port-Sarasota-Bradenton FL

Income as % of the MSA Median: Upper-Income (62), Middle-Income (99), Moderate-Income (48), Low-Income (5), All Others (3)

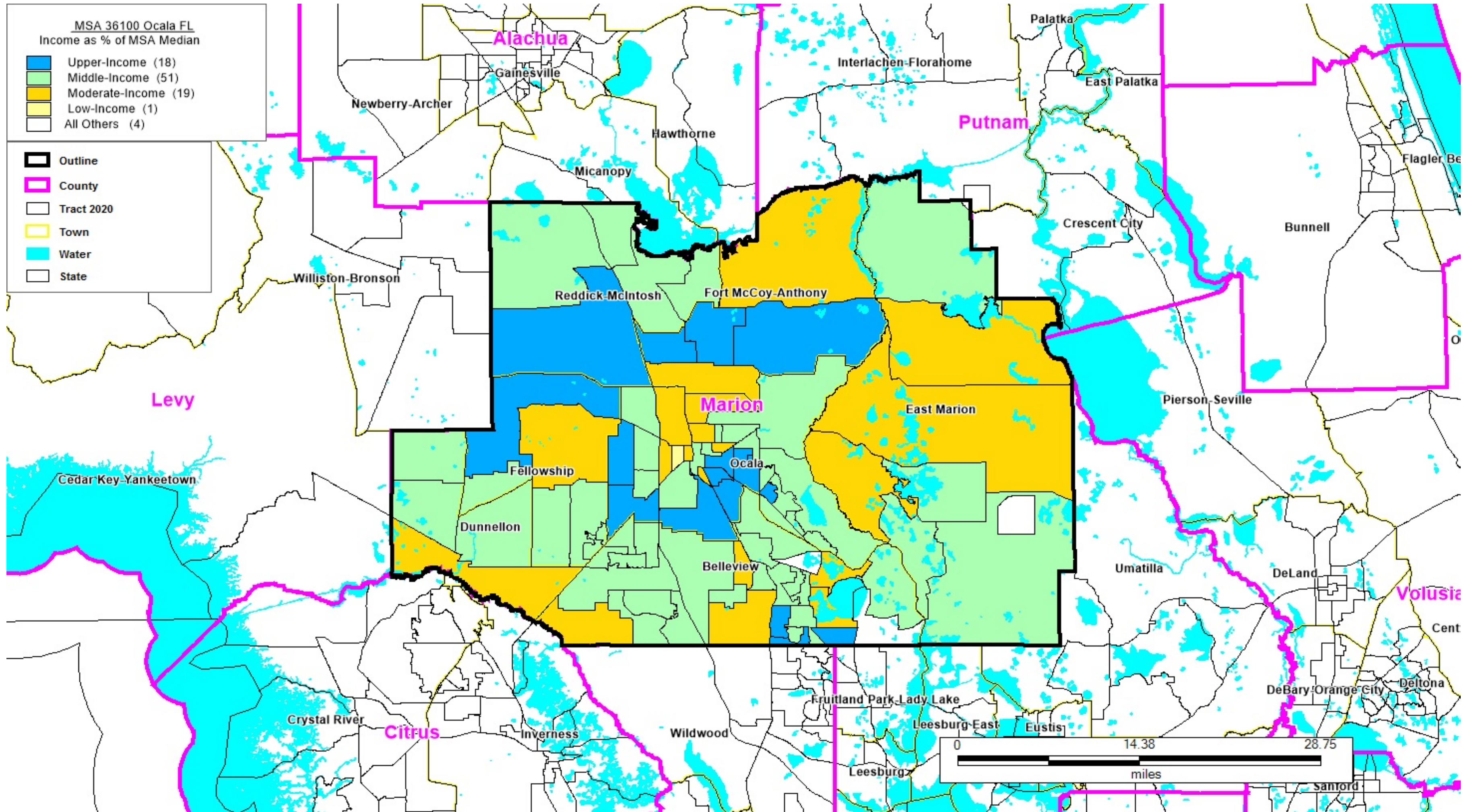
Outline - shown in a Black outline, County - shown in a pink outline, Tract 2020 - shown in a Black outline, Town - shown in a yellow outline, Water - shown in a blue outline, State - shown in a Black outline

FLORIDA

MSA 35840 North Port-Sarasota-Bradenton FL

FORMAT: STATECODE/COUNTYCODE/TRACTCODE

12/081/0001.01, 12/081/0001.03, 12/081/0001.05, 12/081/0001.06, 12/081/0002.01, 12/081/0002.03, 12/081/0002.04, 12/081/0003.04, 12/081/0003.05, 12/081/0003.07, 12/081/0003.09, 12/081/0003.10, 12/081/0003.11, 12/081/0003.12, 12/081/0003.13, 12/081/0003.14, 12/081/0004.03, 12/081/0004.05, 12/081/0004.06, 12/081/0004.07, 12/081/0004.09, 12/081/0004.10, 12/081/0005.01, 12/081/0005.03, 12/081/0005.04, 12/081/0006.01, 12/081/0006.03, 12/081/0006.04, 12/081/0007.03, 12/081/0007.04, 12/081/0007.05, 12/081/0008.04, 12/081/0008.05, 12/081/0008.08, 12/081/0008.09, 12/081/0008.10, 12/081/0008.11, 12/081/0008.12, 12/081/0008.13, 12/081/0008.14, 12/081/0009.01, 12/081/0009.02, 12/081/0010.01, 12/081/0010.02, 12/081/0011.04, 12/081/0011.05, 12/081/0011.06, 12/081/0011.07, 12/081/0011.08, 12/081/0012.02, 12/081/0012.03, 12/081/0012.04, 12/081/0013.00, 12/081/0014.02, 12/081/0014.04, 12/081/0014.05, 12/081/0014.06, 12/081/0015.01, 12/081/0015.02, 12/081/0016.02, 12/081/0016.03, 12/081/0016.04, 12/081/0017.01, 12/081/0017.05, 12/081/0018.01, 12/081/0018.02, 12/081/0019.04, 12/081/0019.07, 12/081/0019.08, 12/081/0019.09, 12/081/0019.10, 12/081/0019.11, 12/081/0019.13, 12/081/0019.14, 12/081/0019.15, 12/081/0019.16, 12/081/0020.03, 12/081/0020.05, 12/081/0020.08, 12/081/0020.10, 12/081/0020.11, 12/081/0020.12, 12/081/0020.14, 12/081/0020.16, 12/081/0020.17, 12/081/0020.18, 12/081/0020.19, 12/081/0020.20, 12/081/0020.21, 12/081/0020.22, 12/081/0020.23, 12/081/0020.24, 12/081/0020.25, 12/081/9900.00, 12/115/0001.02, 12/115/0001.03, 12/115/0001.04, 12/115/0002.00, 12/115/0003.00, 12/115/0004.01, 12/115/0004.04, 12/115/0004.05, 12/115/0004.06, 12/115/0004.07, 12/115/0005.01, 12/115/0005.02, 12/115/0005.03, 12/115/0006.01, 12/115/0006.02, 12/115/0007.00, 12/115/0008.01, 12/115/0008.02, 12/115/0009.00, 12/115/0010.00, 12/115/0011.01, 12/115/0011.02, 12/115/0012.02, 12/115/0012.03, 12/115/0012.04, 12/115/0012.05, 12/115/0012.06, 12/115/0013.01, 12/115/0013.02, 12/115/0013.03, 12/115/0013.04, 12/115/0014.02, 12/115/0014.03, 12/115/0014.04, 12/115/0014.05, 12/115/0015.03, 12/115/0015.04, 12/115/0015.05, 12/115/0015.08, 12/115/0015.09, 12/115/0015.10, 12/115/0015.11, 12/115/0016.01, 12/115/0016.02, 12/115/0017.02, 12/115/0017.03, 12/115/0017.04, 12/115/0018.01, 12/115/0018.03, 12/115/0018.04, 12/115/0018.05, 12/115/0019.03, 12/115/0019.04, 12/115/0019.05, 12/115/0019.09, 12/115/0020.03, 12/115/0020.04, 12/115/0020.07, 12/115/0020.08, 12/115/0020.11, 12/115/0020.12, 12/115/0020.13, 12/115/0020.14, 12/115/0020.15, 12/115/0020.16, 12/115/0021.01, 12/115/0021.02, 12/115/0022.01, 12/115/0022.03, 12/115/0022.04, 12/115/0022.05, 12/115/0023.02, 12/115/0023.04, 12/115/0023.05, 12/115/0023.06, 12/115/0023.07, 12/115/0024.01, 12/115/0024.03, 12/115/0024.04, 12/115/0025.04, 12/115/0025.05, 12/115/0025.07, 12/115/0025.08, 12/115/0025.09, 12/115/0025.10, 12/115/0025.11, 12/115/0026.01, 12/115/0026.02, 12/115/0026.03, 12/115/0026.04, 12/115/0026.05, 12/115/0027.10, 12/115/0027.14, 12/115/0027.16, 12/115/0027.20, 12/115/0027.21, 12/115/0027.23, 12/115/0027.24, 12/115/0027.25, 12/115/0027.26, 12/115/0027.27, 12/115/0027.28, 12/115/0027.29, 12/115/0027.30, 12/115/0027.31, 12/115/0027.32, 12/115/0027.33, 12/115/0027.34, 12/115/0027.35, 12/115/0027.36, 12/115/0027.37, 12/115/0027.38, 12/115/0027.39, 12/115/0027.40, 12/115/0027.41, 12/115/0027.42, 12/115/0027.43, 12/115/0027.44, 12/115/0027.45, 12/115/0027.46, 12/115/0027.47, 12/115/0027.48, 12/115/9900.00



A map of MSA 36100 Ocala FL

Income as % of the MSA Median: Upper-Income (18), Middle-Income (51), Moderate-Income (19), Low-Income (1), All Others (4)

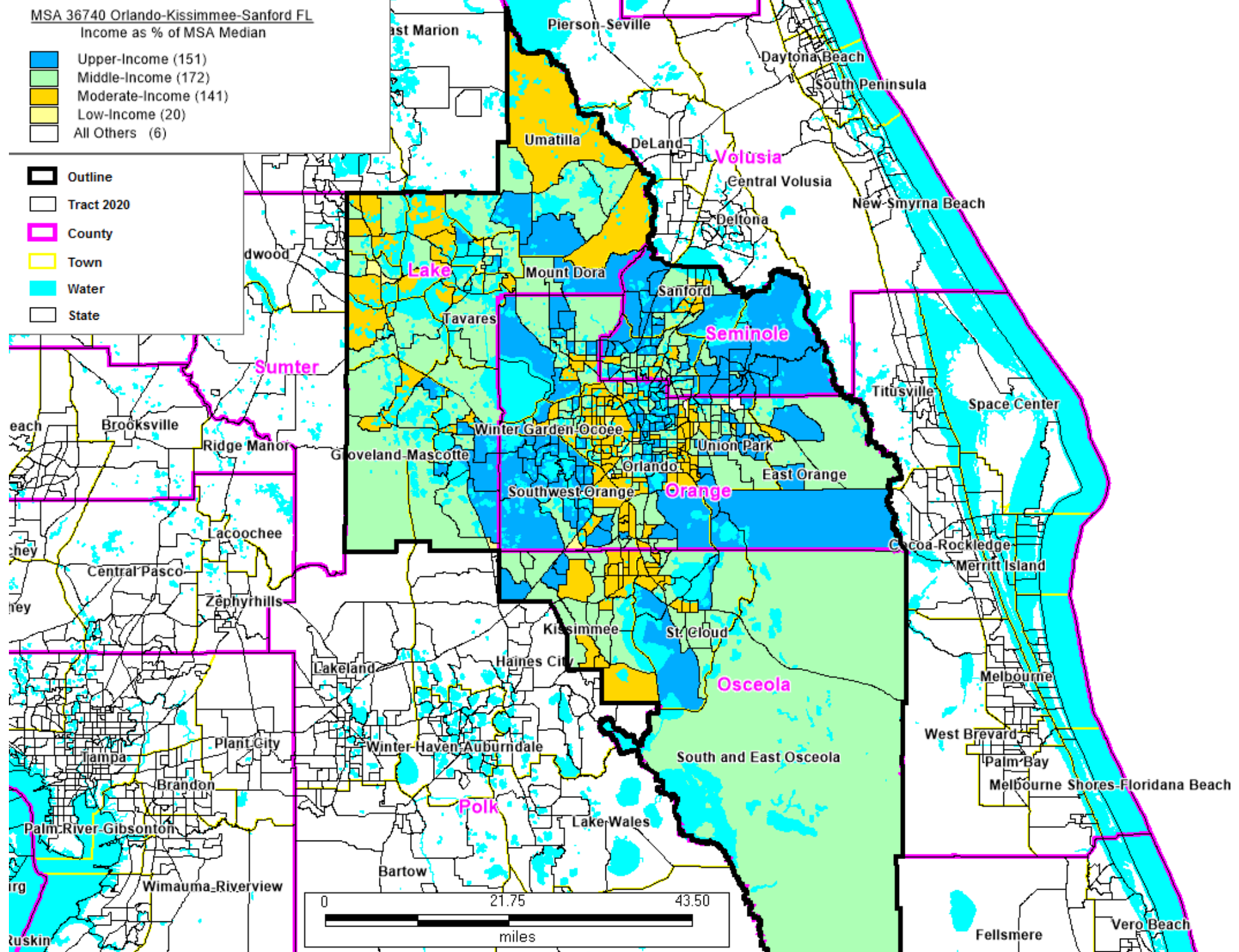
Outline - shown in a Black outline, County - shown in a pink outline, Tract 2020 - shown in a Black outline, Town - shown in a yellow outline, Water - shown in a blue outline, State - shown in a Black outline

FLORIDA

MSA 36100 Ocala FL

FORMAT: STATECODE/COUNTYCODE/TRACTCODE

12/083/0001.01, 12/083/0001.02, 12/083/0002.01, 12/083/0002.02, 12/083/0002.03, 12/083/0003.02, 12/083/0003.03, 12/083/0003.04, 12/083/0004.01, 12/083/0004.02, 12/083/0005.01, 12/083/0005.02, 12/083/0006.01, 12/083/0006.04, 12/083/0006.05, 12/083/0006.06, 12/083/0006.07, 12/083/0007.03, 12/083/0007.04, 12/083/0007.05, 12/083/0007.06, 12/083/0007.07, 12/083/0008.03, 12/083/0008.04, 12/083/0008.05, 12/083/0008.06, 12/083/0008.07, 12/083/0008.08, 12/083/0008.09, 12/083/0008.10, 12/083/0008.11, 12/083/0009.01, 12/083/0009.03, 12/083/0009.04, 12/083/0010.03, 12/083/0010.05, 12/083/0010.07, 12/083/0010.08, 12/083/0010.09, 12/083/0010.10, 12/083/0010.11, 12/083/0010.12, 12/083/0010.13, 12/083/0011.02, 12/083/0011.03, 12/083/0011.05, 12/083/0011.06, 12/083/0012.04, 12/083/0012.05, 12/083/0012.06, 12/083/0012.08, 12/083/0012.09, 12/083/0012.10, 12/083/0012.11, 12/083/0013.01, 12/083/0013.02, 12/083/0014.01, 12/083/0014.03, 12/083/0014.04, 12/083/0015.00, 12/083/0016.00, 12/083/0017.00, 12/083/0018.00, 12/083/0019.00, 12/083/0020.01, 12/083/0020.02, 12/083/0021.00, 12/083/0022.01, 12/083/0022.02, 12/083/0022.03, 12/083/0023.02, 12/083/0023.03, 12/083/0023.04, 12/083/0024.01, 12/083/0024.02, 12/083/0025.03, 12/083/0025.04, 12/083/0025.05, 12/083/0025.06, 12/083/0025.07, 12/083/0026.02, 12/083/0026.04, 12/083/0026.05, 12/083/0026.07, 12/083/0026.08, 12/083/0026.09, 12/083/0026.10, 12/083/0027.03, 12/083/0027.04, 12/083/0027.05, 12/083/0027.06, 12/083/9800.00, 12/083/9801.00



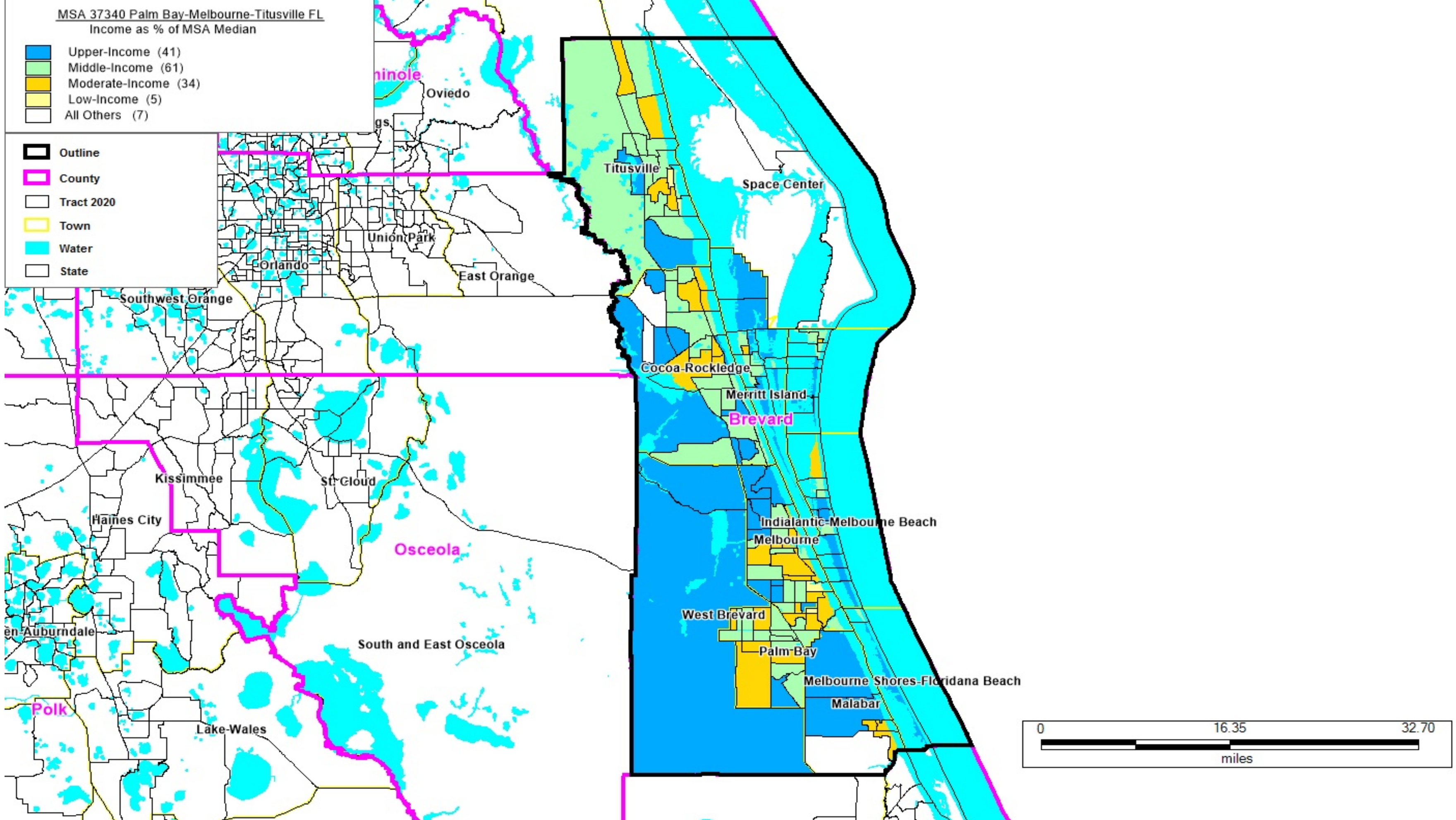
A map of MSA 36740 Orlando-Kissimmee-Sanford FL
Income as % of the MSA Median: Upper-Income (151), Middle-Income (172), Moderate-Income (141), Low-Income (20), All Others (6)
Outline - shown in a Black outline, County - shown in a pink outline, Tract 2020 - shown in a Black outline, Town - shown in a yellow outline, Water - shown in a blue outline, State - shown in a Black outline

FLORIDA

MSA 36740 Orlando-Kissimmee-Sanford FL

FORMAT: STATECODE/COUNTYCODE/TRACTCODE

12/097/0429.05, 12/097/0431.00, 12/097/0432.03, 12/097/0432.05, 12/097/0432.07, 12/097/0432.08, 12/097/0432.09, 12/097/0433.01, 12/097/0433.03, 12/097/0433.04, 12/097/0434.00, 12/097/0435.00, 12/097/0436.00, 12/097/0437.00, 12/097/0438.01, 12/097/0438.02, 12/117/0201.01, 12/117/0201.02, 12/117/0202.01, 12/117/0202.02, 12/117/0203.01, 12/117/0203.02, 12/117/0204.01, 12/117/0204.02, 12/117/0205.00, 12/117/0206.01, 12/117/0206.02, 12/117/0207.03, 12/117/0207.04, 12/117/0207.05, 12/117/0207.06, 12/117/0207.07, 12/117/0208.03, 12/117/0208.05, 12/117/0208.06, 12/117/0208.07, 12/117/0208.08, 12/117/0208.10, 12/117/0208.11, 12/117/0208.12, 12/117/0209.01, 12/117/0209.02, 12/117/0209.04, 12/117/0209.05, 12/117/0210.00, 12/117/0211.00, 12/117/0212.01, 12/117/0212.03, 12/117/0212.05, 12/117/0212.06, 12/117/0213.06, 12/117/0213.07, 12/117/0213.11, 12/117/0213.12, 12/117/0213.13, 12/117/0213.14, 12/117/0213.15, 12/117/0213.16, 12/117/0213.17, 12/117/0213.18, 12/117/0213.19, 12/117/0213.20, 12/117/0213.21, 12/117/0214.01, 12/117/0214.03, 12/117/0214.04, 12/117/0215.04, 12/117/0215.05, 12/117/0215.06, 12/117/0215.07, 12/117/0216.04, 12/117/0216.06, 12/117/0216.08, 12/117/0216.09, 12/117/0216.11, 12/117/0216.12, 12/117/0216.13, 12/117/0216.14, 12/117/0216.17, 12/117/0217.04, 12/117/0217.05, 12/117/0217.06, 12/117/0217.07, 12/117/0217.08, 12/117/0218.02, 12/117/0218.03, 12/117/0218.05, 12/117/0218.06, 12/117/0219.01, 12/117/0219.02, 12/117/0220.01, 12/117/0220.02, 12/117/0220.04, 12/117/0220.06, 12/117/0220.07, 12/117/0221.01, 12/117/0221.04, 12/117/0221.05, 12/117/0221.06, 12/117/0222.01, 12/117/0222.05, 12/117/0222.06, 12/117/0222.07, 12/117/0222.08, 12/117/0222.09



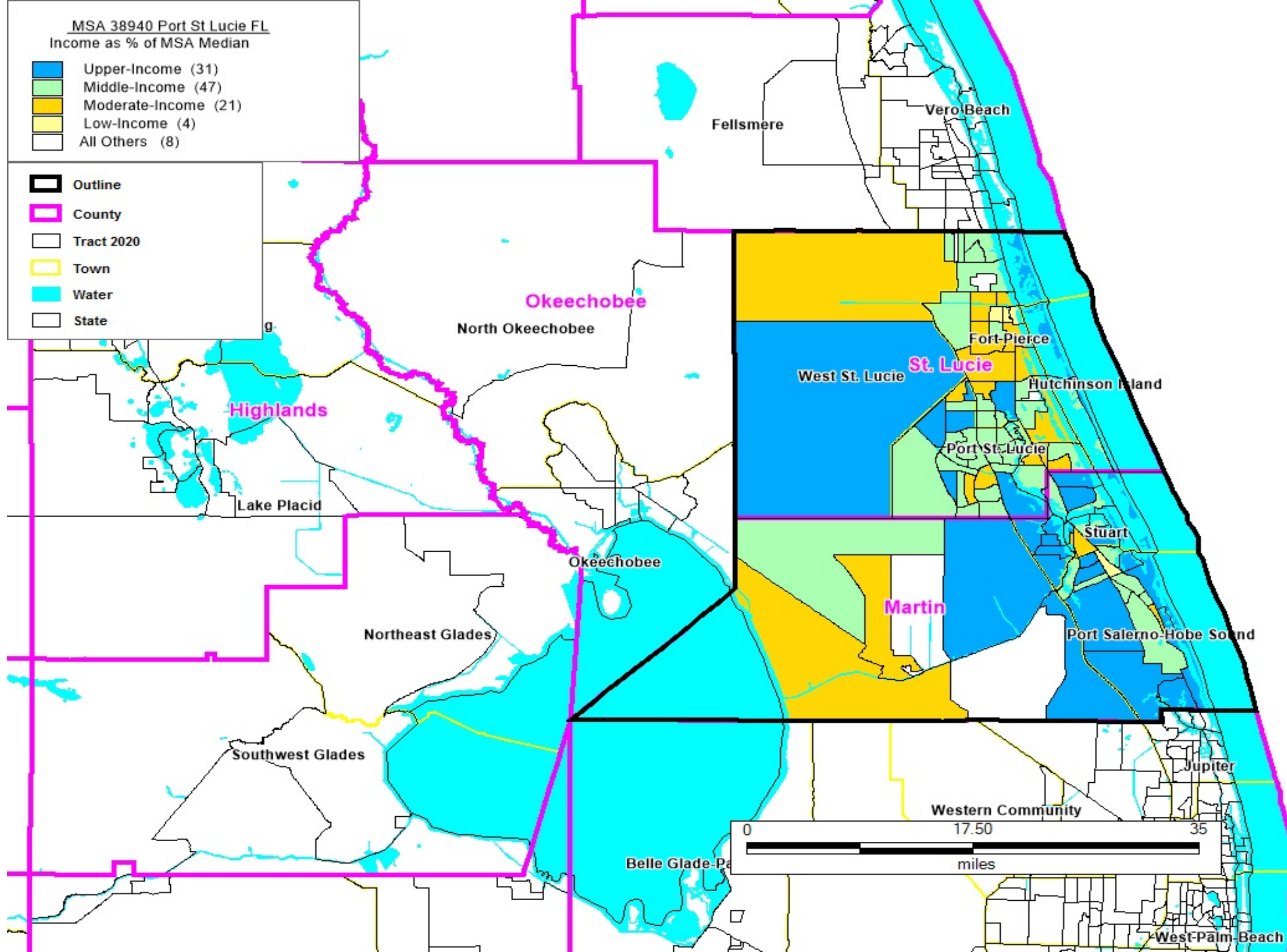
A map of MSA 37340 Palm Bay-Melbourne-Titusville FL
Income as % of the MSA Median: Upper-Income (41), Middle-Income (61), Moderate-Income (34), Low-Income (5), All Others (7)
Outline - shown in a Black outline, County - shown in a pink outline, Tract 2020 - shown in a Black outline, Town - shown in a yellow outline, Water - shown in a blue outline, State - shown in a Black outline

FLORIDA

MSA 37340 Palm Bay-Melbourne-Titusville FL

FORMAT: STATECODE/COUNTYCODE/TRACTCODE

12/009/0601.03, 12/009/0601.04, 12/009/0601.05, 12/009/0601.06, 12/009/0602.01, 12/009/0602.02, 12/009/0603.01, 12/009/0603.02, 12/009/0604.00, 12/009/0605.00, 12/009/0606.00, 12/009/0607.00, 12/009/0610.01, 12/009/0610.02, 12/009/0611.00, 12/009/0612.01, 12/009/0612.02, 12/009/0621.06, 12/009/0621.08, 12/009/0621.09, 12/009/0621.10, 12/009/0621.11, 12/009/0621.12, 12/009/0621.13, 12/009/0621.14, 12/009/0621.15, 12/009/0623.01, 12/009/0623.02, 12/009/0624.01, 12/009/0624.02, 12/009/0625.00, 12/009/0626.00, 12/009/0628.00, 12/009/0629.00, 12/009/0630.00, 12/009/0631.02, 12/009/0631.04, 12/009/0631.05, 12/009/0631.06, 12/009/0631.08, 12/009/0631.09, 12/009/0641.02, 12/009/0641.23, 12/009/0641.24, 12/009/0641.26, 12/009/0641.27, 12/009/0641.28, 12/009/0641.29, 12/009/0641.30, 12/009/0642.01, 12/009/0642.02, 12/009/0643.01, 12/009/0643.02, 12/009/0644.00, 12/009/0645.00, 12/009/0646.01, 12/009/0646.02, 12/009/0647.01, 12/009/0647.02, 12/009/0648.00, 12/009/0649.01, 12/009/0649.02, 12/009/0650.01, 12/009/0650.22, 12/009/0650.23, 12/009/0650.24, 12/009/0650.25, 12/009/0651.23, 12/009/0651.24, 12/009/0651.26, 12/009/0651.27, 12/009/0651.28, 12/009/0651.29, 12/009/0651.30, 12/009/0651.31, 12/009/0652.01, 12/009/0652.02, 12/009/0652.31, 12/009/0652.36, 12/009/0652.37, 12/009/0652.38, 12/009/0652.39, 12/009/0652.40, 12/009/0661.01, 12/009/0661.03, 12/009/0661.04, 12/009/0662.00, 12/009/0663.01, 12/009/0663.02, 12/009/0664.00, 12/009/0665.00, 12/009/0666.00, 12/009/0667.00, 12/009/0668.00, 12/009/0669.00, 12/009/0671.00, 12/009/0681.01, 12/009/0681.02, 12/009/0684.00, 12/009/0685.01, 12/009/0685.02, 12/009/0686.01, 12/009/0686.03, 12/009/0686.04, 12/009/0691.00, 12/009/0692.00, 12/009/0693.00, 12/009/0694.00, 12/009/0697.00, 12/009/0698.01, 12/009/0698.02, 12/009/0699.03, 12/009/0699.04, 12/009/0699.05, 12/009/0699.06, 12/009/0699.07, 12/009/0711.00, 12/009/0712.01, 12/009/0712.02, 12/009/0712.03, 12/009/0712.04, 12/009/0712.05, 12/009/0713.35, 12/009/0713.37, 12/009/0713.39, 12/009/0713.41, 12/009/0713.42, 12/009/0713.43, 12/009/0713.44, 12/009/0713.45, 12/009/0713.46, 12/009/0713.47, 12/009/0713.48, 12/009/0713.49, 12/009/0713.50, 12/009/0713.51, 12/009/0713.52, 12/009/0713.53, 12/009/0713.54, 12/009/0714.01, 12/009/0714.02, 12/009/0715.00, 12/009/0716.01, 12/009/0716.02, 12/009/0717.00, 12/009/9800.00, 12/009/9801.00, 12/009/9900.00



A map of MSA 38940 Port St. Lucie FL

Income as % of the MSA Median: Upper-Income (31), Middle-Income (47), Moderate-Income (21), Low-Income (4), All Others (8)

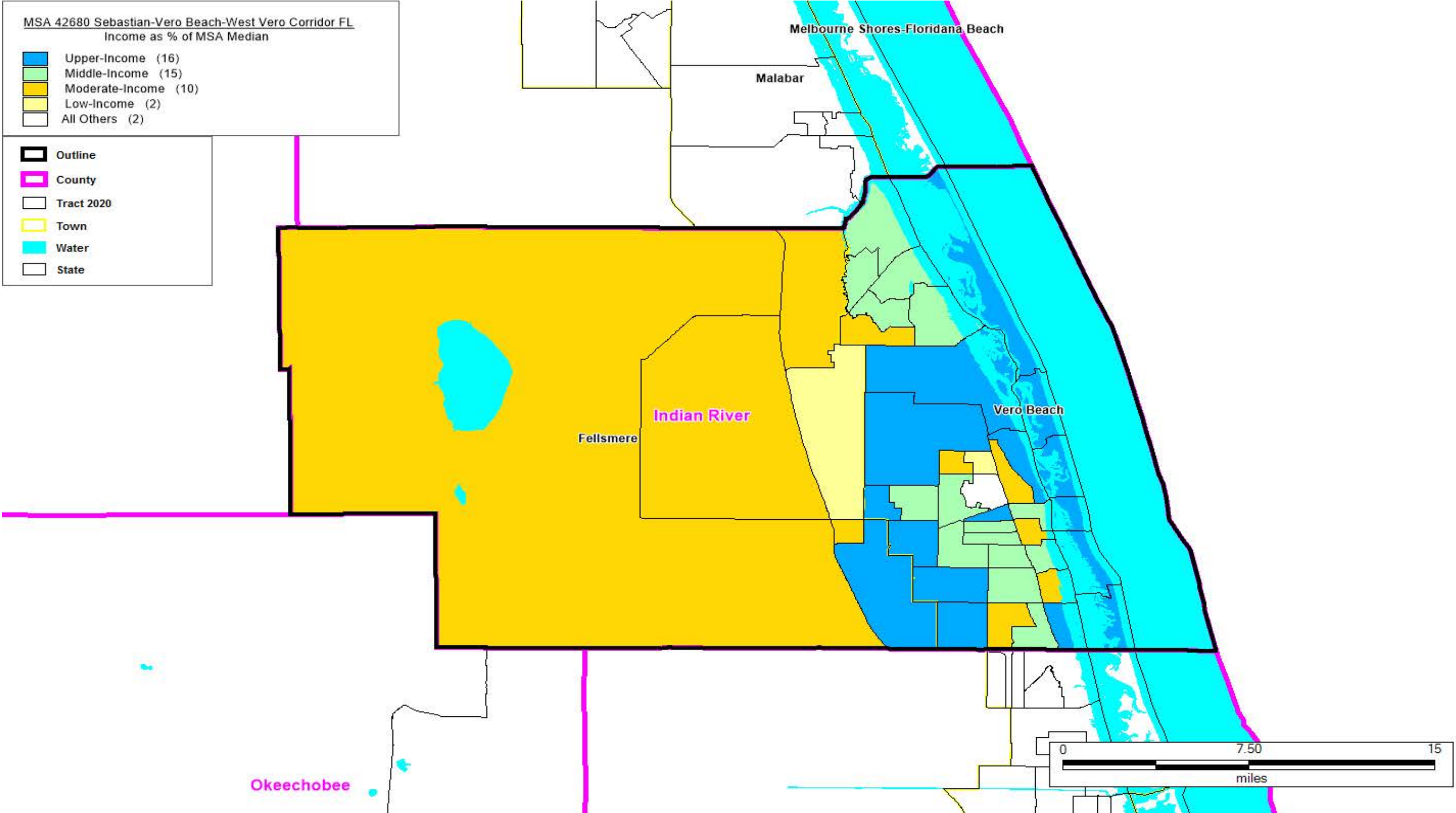
Outline - shown in a Black outline, County - shown in a pink outline, Tract 2020 - shown in a Black outline, Town - shown in a yellow outline, Water - shown in a blue outline, State - shown in a Black outline

FLORIDA

MSA 38940 Port St Lucie FL

FORMAT: STATECODE/COUNTYCODE/TRACTCODE

12/085/0001.00, 12/085/0002.00, 12/085/0003.00, 12/085/0004.00, 12/085/0005.01, 12/085/0005.02, 12/085/0006.03, 12/085/0006.04, 12/085/0006.06, 12/085/0006.07, 12/085/0006.10, 12/085/0007.01, 12/085/0007.02, 12/085/0008.00, 12/085/0009.01, 12/085/0009.02, 12/085/0010.00, 12/085/0011.03, 12/085/0011.05, 12/085/0011.06, 12/085/0011.07, 12/085/0011.08, 12/085/0012.00, 12/085/0013.01, 12/085/0013.02, 12/085/0014.04, 12/085/0014.06, 12/085/0014.07, 12/085/0014.08, 12/085/0014.09, 12/085/0014.10, 12/085/0015.00, 12/085/0016.01, 12/085/0016.02, 12/085/0017.01, 12/085/0017.02, 12/085/0017.03, 12/085/0018.03, 12/085/0018.04, 12/085/0018.05, 12/085/0018.06, 12/085/9900.00, 12/085/9901.00, 12/111/3801.00, 12/111/3802.00, 12/111/3803.00, 12/111/3804.00, 12/111/3805.00, 12/111/3806.00, 12/111/3807.00, 12/111/3808.00, 12/111/3809.01, 12/111/3809.02, 12/111/3810.00, 12/111/3811.03, 12/111/3811.04, 12/111/3811.05, 12/111/3811.06, 12/111/3811.07, 12/111/3812.04, 12/111/3813.00, 12/111/3814.01, 12/111/3814.02, 12/111/3815.04, 12/111/3815.05, 12/111/3815.06, 12/111/3815.07, 12/111/3815.08, 12/111/3816.02, 12/111/3816.03, 12/111/3816.04, 12/111/3816.05, 12/111/3817.01, 12/111/3817.02, 12/111/3818.02, 12/111/3818.03, 12/111/3818.04, 12/111/3819.00, 12/111/3820.07, 12/111/3820.08, 12/111/3820.09, 12/111/3820.10, 12/111/3820.11, 12/111/3820.12, 12/111/3820.13, 12/111/3820.14, 12/111/3820.15, 12/111/3820.16, 12/111/3821.10, 12/111/3821.12, 12/111/3821.14, 12/111/3821.15, 12/111/3821.16, 12/111/3821.17, 12/111/3821.18, 12/111/3821.19, 12/111/3821.20, 12/111/3821.21, 12/111/3821.22, 12/111/3821.23, 12/111/3821.24, 12/111/3821.25, 12/111/3821.26, 12/111/3821.27, 12/111/3821.28, 12/111/3821.29, 12/111/3821.30, 12/111/3822.01, 12/111/3822.02, 12/111/9800.00, 12/111/9900.00



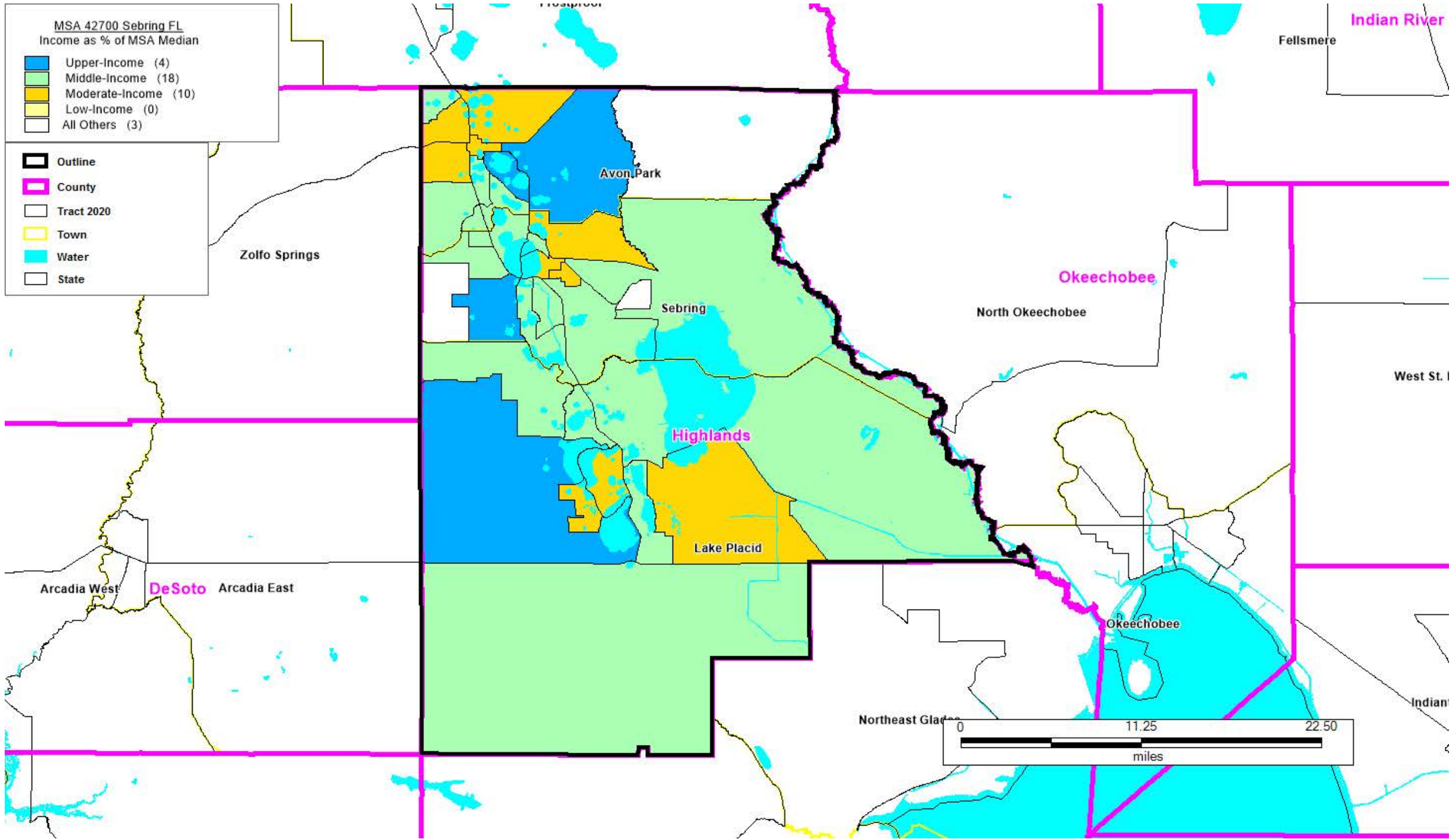
A map of MSA 42680 Sebastian-vero beach-west vero corridor FL
 Income as % of the MSA Median: Upper-Income (16), Middle-Income (15), Moderate-Income (10), Low-Income (2), All Others (2)
 Outline - shown in a Black outline, County - shown in a pink outline, Tract 2020 - shown in a Black outline, Town - shown in a yellow outline, Water - shown in a blue outline, State - shown in a Black outline

FLORIDA

MSA 42680 Sebastian-Vero Beach-West Vero Corridor FL

FORMAT: STATECODE/COUNTYCODE/TRACTCODE

12/061/0501.01, 12/061/0501.02, 12/061/0502.01, 12/061/0502.02, 12/061/0503.03, 12/061/0503.04, 12/061/0503.05, 12/061/0503.06, 12/061/0504.01, 12/061/0504.02, 12/061/0505.04, 12/061/0505.05, 12/061/0505.06, 12/061/0505.07, 12/061/0505.08, 12/061/0505.09, 12/061/0506.01, 12/061/0506.02, 12/061/0506.03, 12/061/0506.04, 12/061/0506.05, 12/061/0506.07, 12/061/0506.08, 12/061/0507.02, 12/061/0507.04, 12/061/0507.06, 12/061/0507.07, 12/061/0507.08, 12/061/0507.09, 12/061/0508.05, 12/061/0508.06, 12/061/0508.07, 12/061/0508.08, 12/061/0508.09, 12/061/0508.10, 12/061/0508.11, 12/061/0508.12, 12/061/0509.03, 12/061/0509.05, 12/061/0509.06, 12/061/0509.07, 12/061/0509.08, 12/061/0509.09, 12/061/9800.00, 12/061/9900.00



A map of MSA 42700 Sebring FL
 Income as % of the MSA Median: Upper-Income (4), Middle-Income (18), Moderate-Income (10), Low-Income (0), All Others (3)
 Outline - shown in a Black outline, County - shown in a pink outline, Tract 2020 - shown in a Black outline, Town - shown in a yellow outline, Water - shown in a blue outline, State - shown in a Black outline

FLORIDA

MSA 42700 Sebring FL

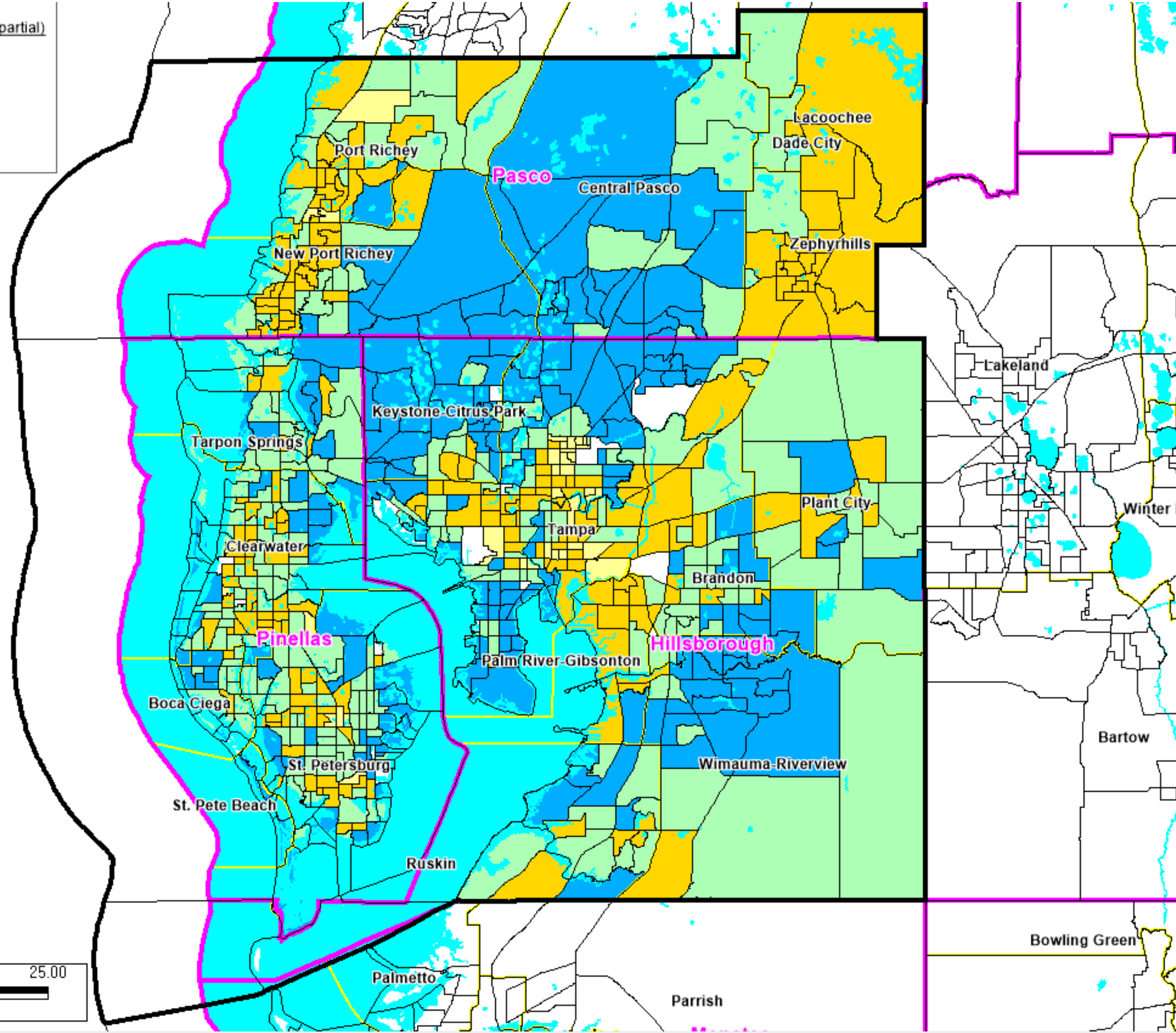
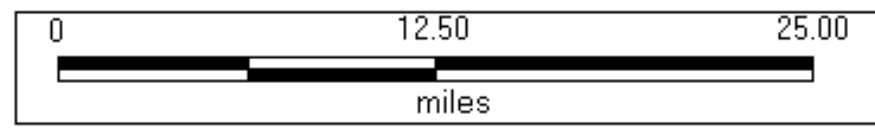
FORMAT: STATECODE/COUNTYCODE/TRACTCODE

12/055/9601.01, 12/055/9601.02, 12/055/9601.04, 12/055/9601.05, 12/055/9602.00, 12/055/9603.00, 12/055/9604.01, 12/055/9604.02, 12/055/9605.01, 12/055/9605.03, 12/055/9605.04, 12/055/9606.01, 12/055/9606.02, 12/055/9607.00, 12/055/9608.00, 12/055/9609.00, 12/055/9610.00, 12/055/9611.00, 12/055/9612.01, 12/055/9612.02, 12/055/9613.01, 12/055/9613.03, 12/055/9613.04, 12/055/9614.01, 12/055/9614.02, 12/055/9615.00, 12/055/9616.01, 12/055/9616.02, 12/055/9616.04, 12/055/9616.05, 12/055/9617.01, 12/055/9617.02, 12/055/9800.00, 12/055/9801.00, 12/055/9802.00

MSA 45300 Tampa-St Petersburg-Clearwater FL (partial)
Income as % of MSA Median

- Upper-Income (213)
- Middle-Income (263)
- Moderate-Income (206)
- Low-Income (35)
- All Others (24)

- Outline
- Tract 2020
- County
- Town
- Water
- State



A map of MSA 45300 Tampa-St. Petersburg-Clearwater FL (partial)
Income as % of the MSA Median: Upper-Income (213), Middle-Income (263), Moderate-Income (206), Low-Income (35), All Others (24)
Outline - shown in a Black outline, County - shown in a pink outline, Tract 2020 - shown in a Black outline, Town - shown in a yellow outline, Water - shown in a blue outline, State - shown in a Black outline

FLORIDA

MSA 45300 Tampa-St Petersburg-Clearwater FL (Partial)

FORMAT: STATECODE/COUNTYCODE/TRACTCODE

12/057/0001.01, 12/057/0001.02, 12/057/0002.01, 12/057/0002.02, 12/057/0003.01, 12/057/0003.02, 12/057/0004.01, 12/057/0004.02, 12/057/0005.00, 12/057/0006.01, 12/057/0006.02, 12/057/0007.01, 12/057/0007.02, 12/057/0008.00, 12/057/0009.01, 12/057/0009.02, 12/057/0010.01, 12/057/0010.02, 12/057/0011.00, 12/057/0012.00, 12/057/0013.00, 12/057/0014.00, 12/057/0015.00, 12/057/0016.00, 12/057/0017.00, 12/057/0018.00, 12/057/0019.00, 12/057/0020.00, 12/057/0021.00, 12/057/0022.00, 12/057/0023.00, 12/057/0024.00, 12/057/0025.00, 12/057/0026.00, 12/057/0027.01, 12/057/0027.02, 12/057/0028.00, 12/057/0029.00, 12/057/0030.00, 12/057/0031.00, 12/057/0032.00, 12/057/0033.00, 12/057/0034.00, 12/057/0035.00, 12/057/0036.00, 12/057/0037.00, 12/057/0038.00, 12/057/0041.00, 12/057/0042.00, 12/057/0043.00, 12/057/0044.00, 12/057/0045.00, 12/057/0046.01, 12/057/0046.02, 12/057/0047.00, 12/057/0048.00, 12/057/0049.01, 12/057/0049.02, 12/057/0050.00, 12/057/0051.01, 12/057/0051.02, 12/057/0053.01, 12/057/0053.02, 12/057/0054.01, 12/057/0055.00, 12/057/0057.00, 12/057/0058.00, 12/057/0059.00, 12/057/0060.00, 12/057/0061.01, 12/057/0061.03, 12/057/0062.00, 12/057/0063.00, 12/057/0064.00, 12/057/0065.01, 12/057/0065.03, 12/057/0065.04, 12/057/0066.00, 12/057/0067.00, 12/057/0068.01, 12/057/0068.02, 12/057/0069.00, 12/057/0070.01, 12/057/0070.02, 12/057/0071.02, 12/057/0071.03, 12/057/0072.00, 12/057/0073.00, 12/057/0101.05, 12/057/0101.06, 12/057/0101.07, 12/057/0101.08, 12/057/0102.03, 12/057/0102.04, 12/057/0102.10, 12/057/0102.11, 12/057/0102.12, 12/057/0102.13, 12/057/0102.15, 12/057/0102.16, 12/057/0102.17, 12/057/0102.18, 12/057/0103.03, 12/057/0103.04, 12/057/0103.05, 12/057/0104.01, 12/057/0104.02, 12/057/0105.01, 12/057/0105.02, 12/057/0106.00, 12/057/0107.01, 12/057/0107.02, 12/057/0108.05, 12/057/0108.08, 12/057/0108.09, 12/057/0108.10, 12/057/0108.11, 12/057/0108.14, 12/057/0108.15, 12/057/0108.16, 12/057/0108.17, 12/057/0108.19, 12/057/0108.20, 12/057/0108.21, 12/057/0108.22, 12/057/0108.23, 12/057/0108.24, 12/057/0109.00, 12/057/0110.03, 12/057/0110.05, 12/057/0110.06, 12/057/0110.07, 12/057/0110.08, 12/057/0110.10, 12/057/0110.13, 12/057/0110.16, 12/057/0110.17, 12/057/0110.18, 12/057/0110.19, 12/057/0111.03, 12/057/0111.06, 12/057/0111.07, 12/057/0111.08, 12/057/0111.09, 12/057/0112.03, 12/057/0112.04, 12/057/0112.05, 12/057/0112.06, 12/057/0113.01, 12/057/0113.03, 12/057/0113.04, 12/057/0114.07, 12/057/0114.08, 12/057/0114.09, 12/057/0114.10, 12/057/0114.11, 12/057/0114.12, 12/057/0114.13, 12/057/0114.14, 12/057/0114.15, 12/057/0114.16, 12/057/0114.17, 12/057/0114.18, 12/057/0115.04, 12/057/0115.06, 12/057/0115.09, 12/057/0115.10, 12/057/0115.12, 12/057/0115.14, 12/057/0115.15, 12/057/0115.16, 12/057/0115.18, 12/057/0115.19, 12/057/0115.20, 12/057/0115.21, 12/057/0115.22, 12/057/0115.23, 12/057/0115.24, 12/057/0115.25, 12/057/0115.26, 12/057/0115.27, 12/057/0115.28, 12/057/0116.03, 12/057/0116.05, 12/057/0116.10, 12/057/0116.11, 12/057/0116.12, 12/057/0116.13, 12/057/0116.14, 12/057/0116.15, 12/057/0116.16, 12/057/0116.17, 12/057/0117.08, 12/057/0117.12, 12/057/0117.13, 12/057/0117.14, 12/057/0117.15, 12/057/0117.16, 12/057/0118.02, 12/057/0118.04, 12/057/0118.05, 12/057/0118.06, 12/057/0119.05, 12/057/0119.07, 12/057/0119.08, 12/057/0119.09, 12/057/0119.10, 12/057/0119.11, 12/057/0120.01, 12/057/0120.02, 12/057/0121.03, 12/057/0121.06, 12/057/0121.07, 12/057/0121.08, 12/057/0121.09, 12/057/0121.10, 12/057/0122.06, 12/057/0122.07, 12/057/0122.08, 12/057/0122.09, 12/057/0122.10, 12/057/0122.11, 12/057/0122.12, 12/057/0122.13, 12/057/0123.01, 12/057/0123.03, 12/057/0123.04, 12/057/0124.01, 12/057/0124.02, 12/057/0124.03, 12/057/0125.01, 12/057/0125.03, 12/057/0125.04, 12/057/0126.00, 12/057/0127.01, 12/057/0127.02, 12/057/0128.00, 12/057/0129.00, 12/057/0130.01, 12/057/0130.02, 12/057/0130.03, 12/057/0130.04, 12/057/0131.00, 12/057/0132.03, 12/057/0132.04, 12/057/0132.05, 12/057/0132.06, 12/057/0132.07, 12/057/0132.08, 12/057/0133.05, 12/057/0133.07, 12/057/0133.10, 12/057/0133.11, 12/057/0133.12, 12/057/0133.13, 12/057/0133.14, 12/057/0133.15, 12/057/0133.16, 12/057/0133.17, 12/057/0133.19, 12/057/0133.20, 12/057/0133.22, 12/057/0133.23, 12/057/0134.06, 12/057/0134.07, 12/057/0134.09, 12/057/0134.10, 12/057/0134.11, 12/057/0134.12, 12/057/0134.13, 12/057/0134.14, 12/057/0134.15, 12/057/0135.01, 12/057/0135.03, 12/057/0135.04, 12/057/0135.05, 12/057/0136.02, 12/057/0136.04, 12/057/0137.02, 12/057/0137.03, 12/057/0137.05, 12/057/0137.06, 12/057/0138.01, 12/057/0138.02, 12/057/0138.03, 12/057/0138.04, 12/057/0138.06, 12/057/0138.07, 12/057/0139.03, 12/057/0139.07, 12/057/0139.12, 12/057/0139.13, 12/057/0139.14, 12/057/0139.15, 12/057/0139.16, 12/057/0139.17, 12/057/0139.18, 12/057/0139.19, 12/057/0139.22, 12/057/0139.23, 12/057/0139.24, 12/057/0139.25, 12/057/0139.26, 12/057/0140.02, 12/057/0140.03, 12/057/0140.07, 12/057/0140.08, 12/057/0140.09, 12/057/0140.10, 12/057/0140.11, 12/057/0140.12, 12/057/0140.13, 12/057/0140.14, 12/057/0140.17, 12/057/0141.04, 12/057/0141.06, 12/057/0141.08, 12/057/0141.09, 12/057/0141.17, 12/057/0141.18, 12/057/0141.19, 12/057/0141.21, 12/057/0141.22, 12/057/0142.00, 12/057/0143.00, 12/057/0144.00, 12/057/9801.00, 12/057/9802.00, 12/057/9803.00, 12/057/9804.00, 12/057/9805.00, 12/057/9806.00, 12/057/9807.00, 12/057/9900.00, 12/057/9901.00, 12/101/0301.01, 12/101/0301.02, 12/101/0302.02, 12/101/0302.03, 12/101/0302.04, 12/101/0302.05, 12/101/0303.03, 12/101/0303.04, 12/101/0304.04, 12/101/0304.05, 12/101/0304.06, 12/101/0304.07, 12/101/0304.08, 12/101/0304.09, 12/101/0304.10, 12/101/0304.11, 12/101/0304.12, 12/101/0305.01, 12/101/0305.02, 12/101/0306.01, 12/101/0307.00, 12/101/0308.00, 12/101/0309.01, 12/101/0309.05, 12/101/0309.06, 12/101/0310.03, 12/101/0310.05, 12/101/0310.06, 12/101/0310.07, 12/101/0310.08, 12/101/0310.09, 12/101/0310.10, 12/101/0310.11, 12/101/0310.12, 12/101/0310.13, 12/101/0310.14, 12/101/0311.01, 12/101/0311.03, 12/101/0311.04, 12/101/0312.03, 12/101/0312.04, 12/101/0312.05, 12/101/0312.06, 12/101/0312.07, 12/101/0312.08, 12/101/0313.01, 12/101/0313.02, 12/101/0314.01, 12/101/0314.04

FLORIDA

Non-MSA North Florida

FORMAT: STATECODE/COUNTYCODE/TRACTCODE

12/007/0001.00, 12/007/0002.01, 12/007/0002.02, 12/007/0003.01, 12/007/0003.02, 12/007/0004.00, 12/023/1102.01, 12/023/1102.02, 12/023/1103.00, 12/023/1104.00, 12/023/1105.00, 12/023/1106.02, 12/023/1106.03, 12/023/1106.04, 12/023/1107.00, 12/023/1108.00, 12/023/1109.01, 12/023/1109.03, 12/023/1109.04, 12/107/9501.00, 12/107/9502.01, 12/107/9502.02, 12/107/9503.00, 12/107/9504.00, 12/107/9505.00, 12/107/9506.00, 12/107/9507.00, 12/107/9508.00, 12/107/9509.00, 12/107/9510.00, 12/107/9511.00, 12/107/9512.00, 12/107/9513.00, 12/107/9514.01, 12/107/9514.02, 12/107/9800.00, 12/121/9701.00, 12/121/9702.00, 12/121/9703.01, 12/121/9703.03, 12/121/9703.04, 12/121/9704.01, 12/121/9704.02, 12/121/9705.01, 12/121/9705.02, 12/121/9706.01, 12/121/9706.02, 12/125/9601.00, 12/125/9602.01, 12/125/9602.02, 12/125/9603.00